

CALL 3 WORKING DAYS
BEFORE YOU DIG-DRILL-BLAST
1-888-721-7877
PALMETTO UTILITY PROTECTION SERVICE

3Ø PAD-MOUNTED
TRANSFORMER - PROVIDED,
INSTALLED, AND MAINTAINED
BY MCEC

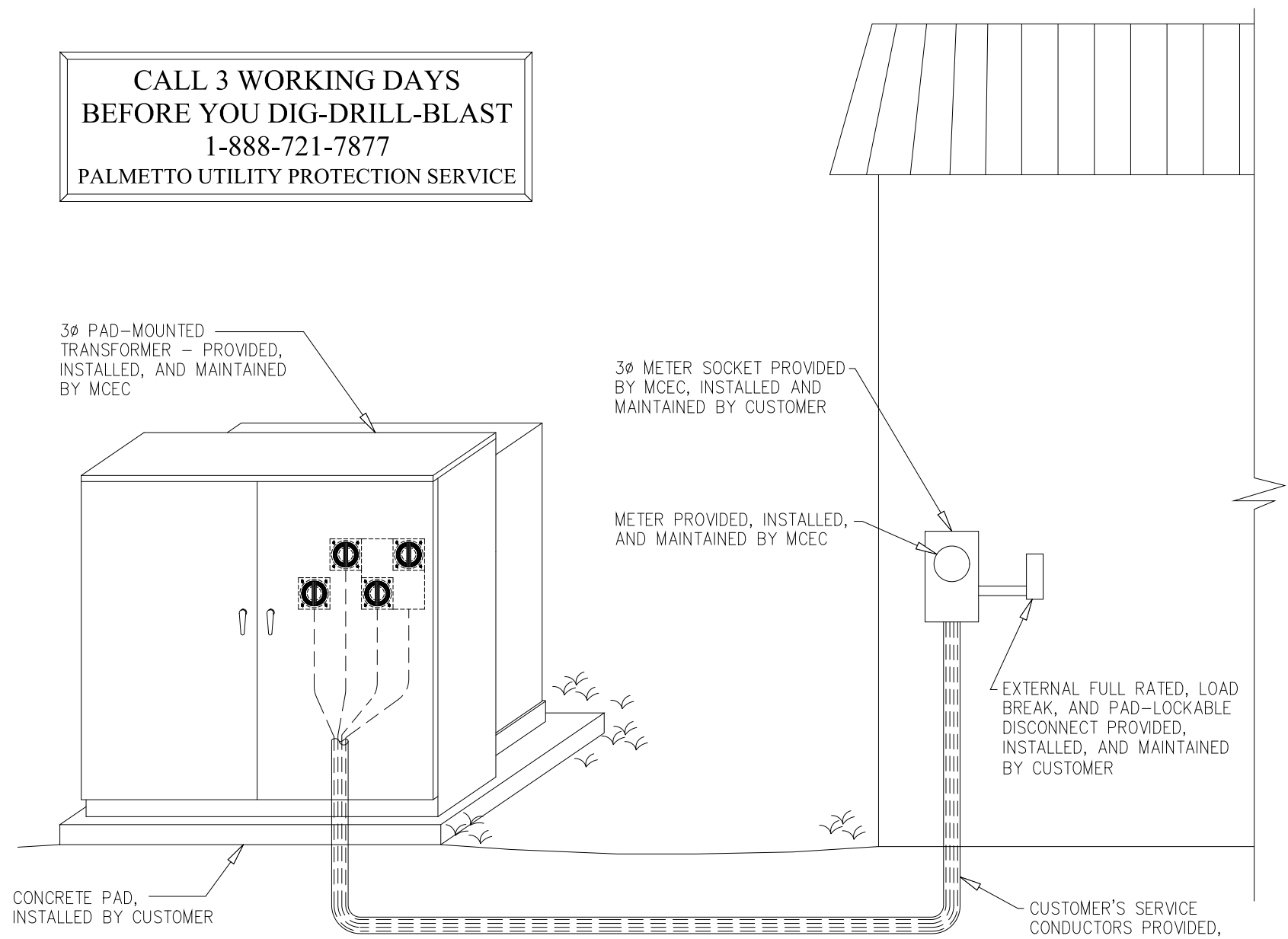
3Ø METER SOCKET PROVIDED
BY MCEC, INSTALLED AND
MAINTAINED BY CUSTOMER

METER PROVIDED, INSTALLED,
AND MAINTAINED BY MCEC

EXTERNAL FULL RATED, LOAD
BREAK, AND PAD-LOCKABLE
DISCONNECT PROVIDED,
INSTALLED, AND MAINTAINED
BY CUSTOMER

CUSTOMER'S SERVICE
CONDUCTORS PROVIDED,
INSTALLED, AND MAINTAINED
BY CUSTOMER

CONCRETE PAD,
INSTALLED BY CUSTOMER



Date

Revision

Date

App. BW 2/10/06

App. _____

App. _____

Scale: N.T.S.

MID-CAROLINA ELECTRIC CO-OP

For 3 Ø NON-RESIDENTIAL UNDERGROUND

SERVICE - 200 AMP MAXIMUM

Date: 2-10-06 Drawn By: KW

C.T. RATING	H	W	D	DESCRIPTION
400:5 OR BELOW	24"	24"	12"	HINGED, PAD-LOCKABLE, WATER TIGHT GALV. STEEL, DURHAM CAT.#242412-RDW OR EQUIV.
OVER 400:5	36"	36"	12"	HINGED, PAD-LOCKABLE, WATER TIGHT GALV. STEEL, DURHAM CAT.#363612-RDW OR EQUIV.

3Ø PAD-MOUNTED _____
TRANSFORMER - PROVIDED,
INSTALLED, AND MAINTAINED
BY MCEC

C.T. CABINET SUPPLIED BY
CUSTOMER ACCORDING TO
MCEC SPECIFICATIONS AND
INSTALLED BY CUSTOMER
(SEE TABLE 1)

3Ø METER SOCKET PROVIDED
BY MCEC, INSTALLED AND
MAINTAINED BY CUSTOMER

METER PROVIDED, INSTALLED,
AND MAINTAINED BY MCEC

EXTERNAL FULL RATED, LOAD
BREAK, AND PAD-LOCKABLE
DISCONNECT PROVIDED,
INSTALLED, AND MAINTAINED
BY CUSTOMER

CONCRETE PAD, _____
INSTALLED BY CUSTOMER

4. CUSTOMER'S SERVICE CONDUCTORS PROVIDED, INSTALLED, AND MAINTAINED BY CUSTOMER

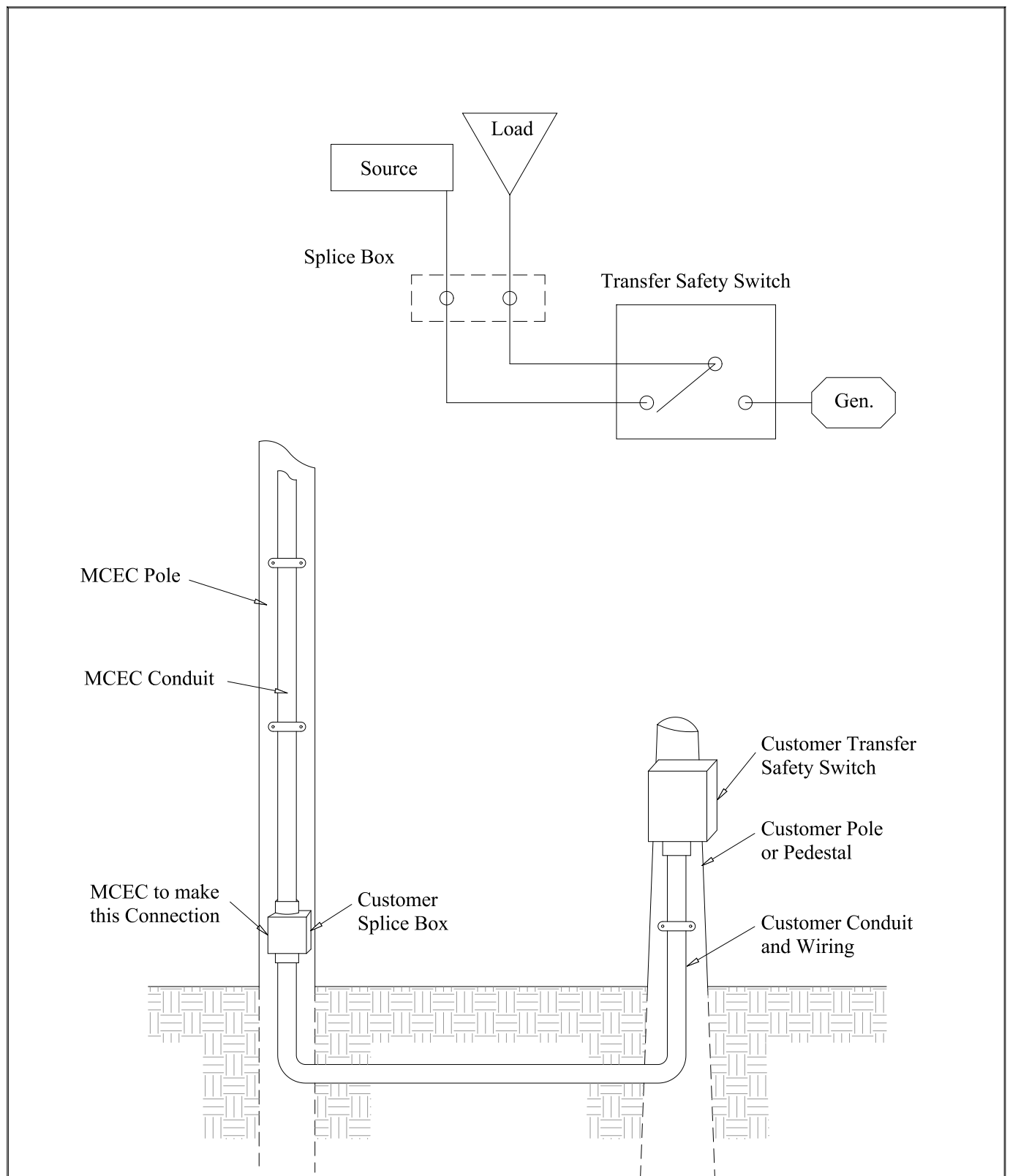
Scale: N.T.S.

For 3 Ø NON-RESIDENTIAL UNDERGROUND

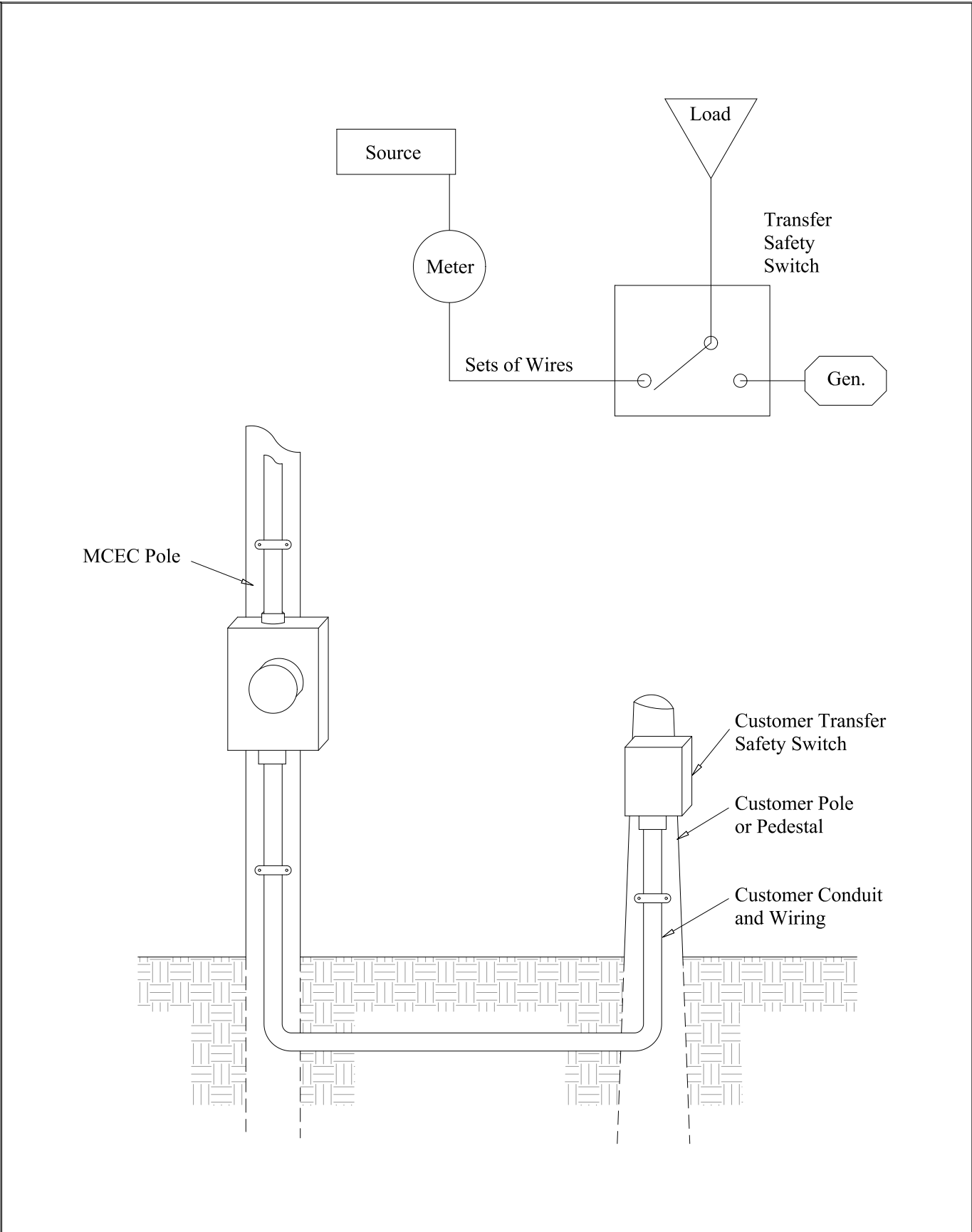
SERVICE - C.T. RATED (OVER 200 AMP)

Date: 2-10-06

Drawn By: KW



Date	Revision	Date	App. RD 1-24-07	MID-CAROLINA ELECTRIC CO-OP	
			App. BKS 1-24-07		
			App. _____	For GENERATOR BY-PASS SWITCH	
				ON MCEC C.T. METER	
			Scale: N.T.S.	DATE: 1-24-07	DRAWN BY: KW



Date	Revision	Date	App. RD 1-24-07	MID-CAROLINA ELECTRIC CO-OP For GENERATOR BY-PASS SWITCH ON MCEC SELF CONTAINED METER
			App. BKS 1-24-07	
			App. _____	
			Scale: N.T.S.	
			DATE: 1-24-07	DRAWN BY: KW

METER SOCKET SPECIFICATIONS

200 AMP SINGLE PHASE RESIDENTIAL SERVICE

ALL SOCKETS ARE TO BE RINGLESS, ALL SOCKETS MUST BE *UL* APPROVED, LISTED DEMINSIONS AND CONNECTOR SIZES ARE MINIMUMS.

CONT. AMP RATING	SERVICE	CONNECTORS SIZE	W	DEMINSIONS (IN) H	D		HUB	NO. OF TERMINALS	BY PASS	ENCLOSURE MATERIAL
200	OH	#6- 350	8	14	4.5		2	4	NONE	GAL. STEEL
200	OH/UG	#6- 350	11	14	4.5		2/BL	4	NONE	GAL. STEEL
200	UG	#6- 350	11	15	4.5		BL	4	NONE	GAL. STEEL

200 AMP SINGLE PHASE COMMERCIAL SERVICE

ALL SOCKETS ARE TO BE RINGLESS, ALL SOCKEST MUST BE *UL* APPROVED, LISTED DEMINSIONS AND CONNECTOR SIZES ARE MINIMUMS.

CONT. AMP RATING	SERVICE	CONNECTORS SIZE	W	DEMINSIONS (IN) H	D		HUB	NO. OF TERMINALS	BY PASS	ENCLOSURE MATERIAL
200	OH	#6- 350	8	14	4.5		2	4	LEVER BYPASS	GAL. STEEL
200	OH/UG	#6- 350	11	14	4.5		2/BL	4	LEVER BYPASS	GAL. STEEL
200	UG	#6- 350	11	15	4.5		BL	4	LEVER BYPASS	GAL. STEEL

320 AMP SINGLE PHASE RESIDENTIAL / COMMERCIAL SERVICE

ALL SOCKETS ARE TO BE RINGLESS, ALL SOCKETS MUST BE *UL* APPROVED, LISTED DEMINSIONS AND CONNECTOR SIZES ARE MINIMUMS. (THIS SOCKET CAN BE PURCHASED FROM MCEC)

CONT. AMP RATING	SERVICE	CONNECTOR SIZE	W	DEMINSIONS (IN) H	D		HUB	NO. OF TERMINALS	BY PASS	ENCLOSURE MATERIAL
320	OH/UG	3/8" STUD	15	36	5.75		4	4	LEVER BYPASS WITH JAW RELEASE	GAL. STEEL

200 AMP POLYPHASE PHASE RESIDENTIAL / COMMERCIAL SERVICE

ALL SOCKETS ARE TO BE RINGLESS, ALL SOCKETS MUST BE *UL* APPROVED, LISTED DEMINSIONS AND CONNECTOR SIZES ARE MINIMUMS. (FURNISHED BY MCEC)

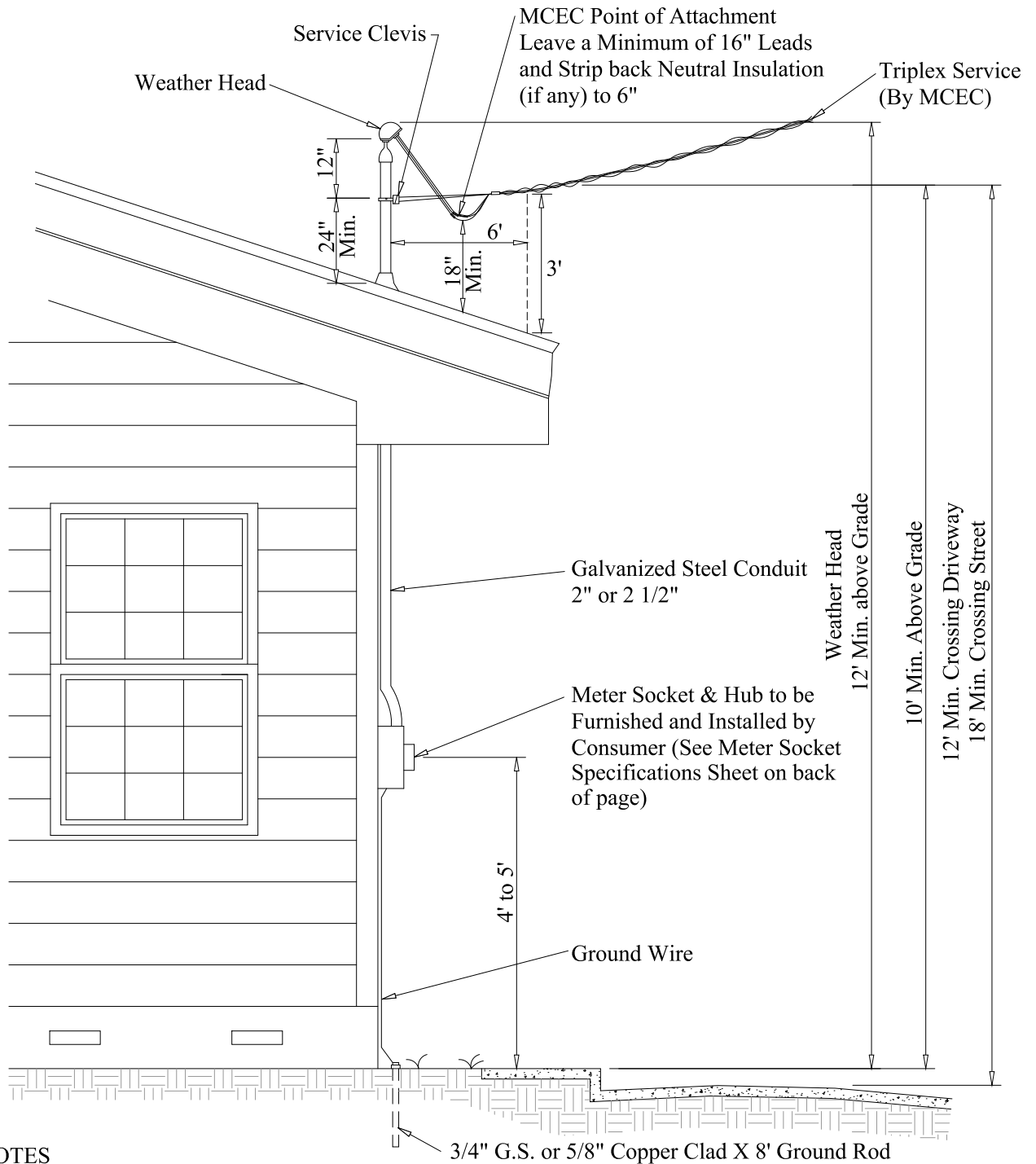
CONT. AMP RATING	SERVICE	CONNECTOR SIZE	W	DEMINSIONS (IN) H	D		HUB	NO. OF TERMINALS	BY PASS	ENCLOSURE MATERIAL
200	OH/UG	3/8" STUD OR #6 – 350	13	19	5.25		3	7	LEVER BYPASS WITH JAW RELEASE	GAL. STEEL

200 AMP SINGLE PHASE METER POLE SERVICE

ALL SOCKETS ARE TO BE RINGLESS, ALL SOCKETS MUST BE *UL* APPROVED, LISTED DEMINSIONS AND CONNECTOR SIZES ARE MINIMUMS. THIS IS A COMBINATION METER SOCKET AND 200 AMP DISCONNECT, CUSTOMER MAY ALSO USE ONE OF THE SELECTIONS FROM SINGLE PHASE RESIDENTIAL SERVICE WITH A SEPARATE 200 AMP DISCONNECT.

CONT. AMP RATING	SERVICE	CONNECTORS SIZE	W	DEMINSIONS (IN) H	D		HUB	NO. OF TERMINALS	BY PASS	ENCLOSURE MATERIAL
200	OH/UG	#6- 350	14	35	4.5		2/BL	4	NONE	GAL. STEEL

TRIPLEX SERVICE

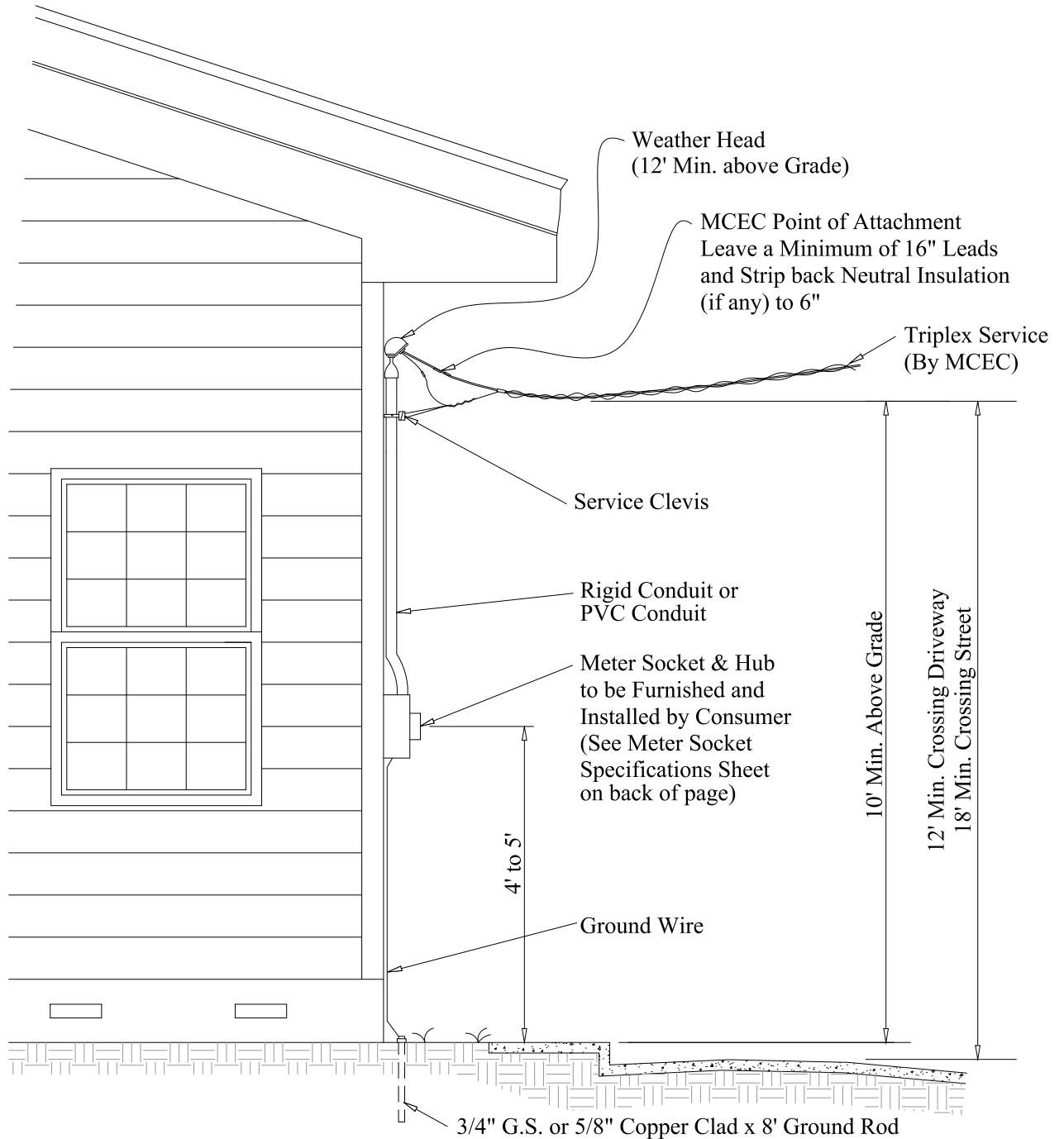


NOTES

1. Comply with Local Ordinances Which Exceed These Standards
2. Conduit to be Properly Blocked to Rafters, and Securely Attached to Outside Wall
3. All Equipment Shown is to be Furnished, Installed, and Maintained by Customer except Meter, Service Wire, and Service Clevis

Date	Revision	Date	App. RD 4-17-78	MID-CAROLINA ELECTRIC CO-OP
5-7-84	UPDATED			
7-12-90	UPDATED		App. JK 4-17-78	For TRIPLEX SERVICE DETAIL (OVER EAVE)
1-5-99	UPDATED		App. _____	
6-28-05	UPDATED			
01-11-07	UPDATED			
			Scale: N.T.S.	Date: 4-11-78
				Drawn By: PL

TRIPLEX SERVICE

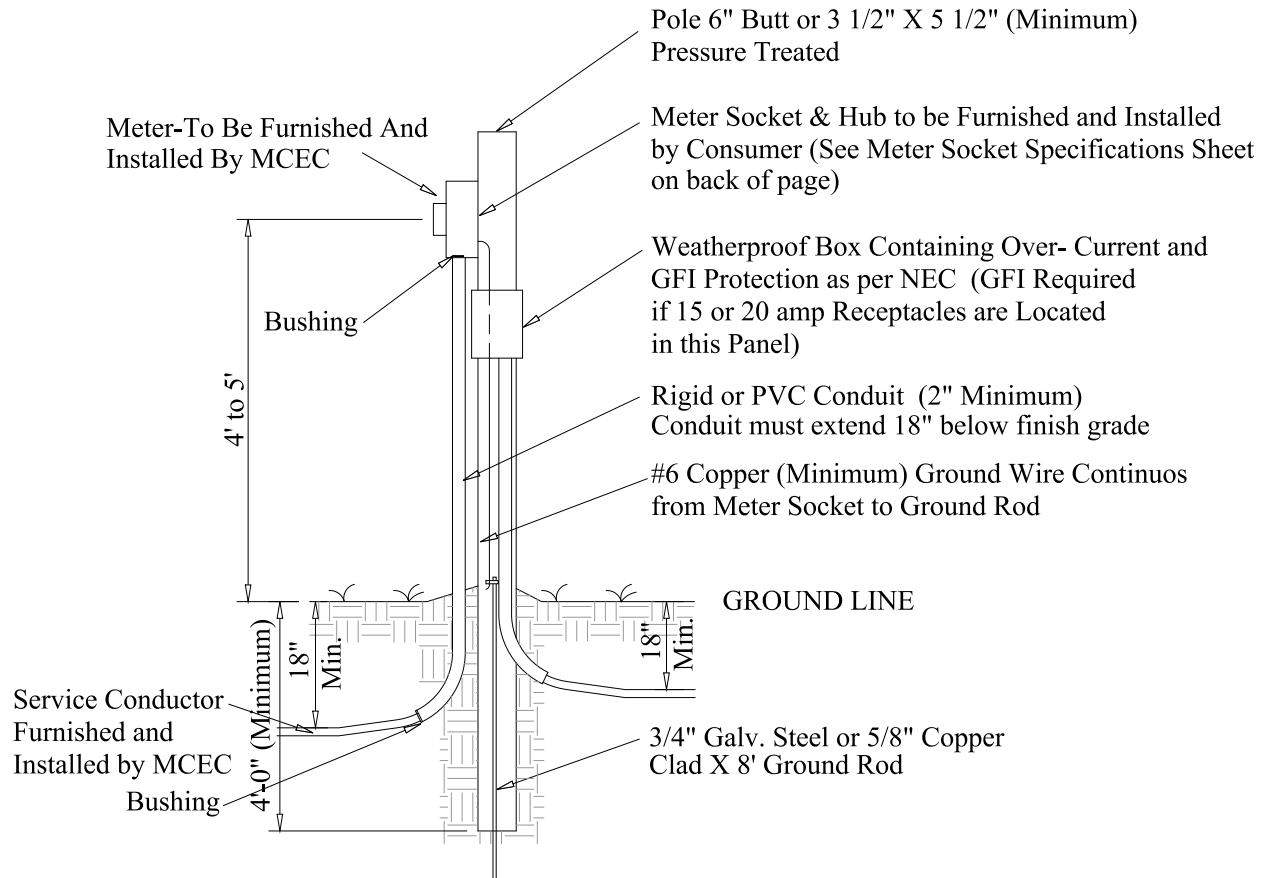


NOTES

1. Comply with Local Ordinances Which Exceed These Standards
2. Conduit must be 2" or 2-1/2" and Securely Fastened to Outside Wall
3. All Equipment Shown is to be Furnished, Installed, and Maintained by Customer except Meter and Service
4. Wireholder to be Securely Mounted into Rafter or Wall Studs

Date	Revision	Date	App. RD 4-17-78	MID-CAROLINA ELECTRIC CO-OP	
5-7-84	UPDATED				
7-12-90	UPDATED		App. JK 4-17-78	For <u>PERMANENT OVERHEAD SERVICE</u> (<u>UNDER EAVE</u>)	
1-5-99	UPDATED		App. _____		
6-28-05	UPDATED				
01-08-07	UPDATED				
			Scale: N.T.S.	Date: 4-11-78	Drawn By: PL

**CALL 3 WORKING DAYS
BEFORE YOU DIG-DRILL-BLAST
1-888-721-7877
PALMETTO UTILITY PROTECTION SERVICE**

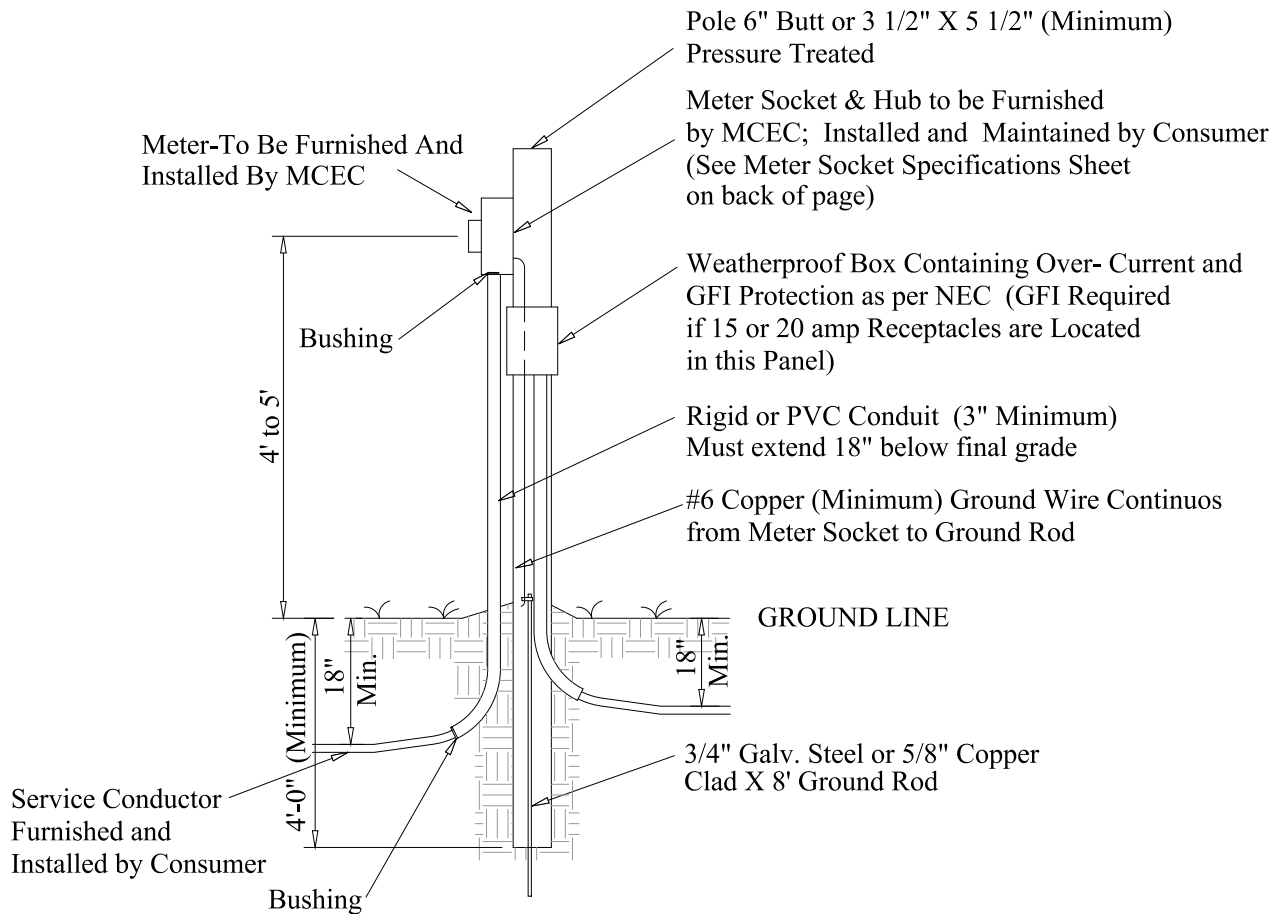


NOTES

1. Comply with Local Ordinances Which Exceed These Standards
2. Locate Pole Between 3' & 30' of Connection.
3. Wire Size to be a Minimum of:
 - #4 Cu. (or equal) for 100 Amp Service
 - #1 Cu. (or equal) for 150 Amp Service
 - #2/0 Cu (or equal) for 200 Amp Service
4. Conduit Size is to be:
 - 1 1/4" for 100 or 150 Amp Service
 - 2" for 200 Amp Service
5. Lexington County requires a #6 or larger green wire to be run with Service Entrance Wire
6. All Material to be Furnished by User Except as Noted
7. Consumer responsible for marking any non-utility installed underground facilities prior to installation of MCEC Underground Service

Date	Revision	Date	App. RD 1-24-07	MID-CAROLINA ELECTRIC CO-OP For PERMANENT UNDERGROUND SERVICE POLE CONNECTION
7-12-90	UPDATED			
1-5-99	UPDATED		App. BKS 1-24-07	
6-28-05	UPDATED		App. _____	
11-29-05	UPDATED			
01-08-07	UPDATED			
			Scale: N.T.S.	DATE: 5-27-88 DRAWN BY: JBA

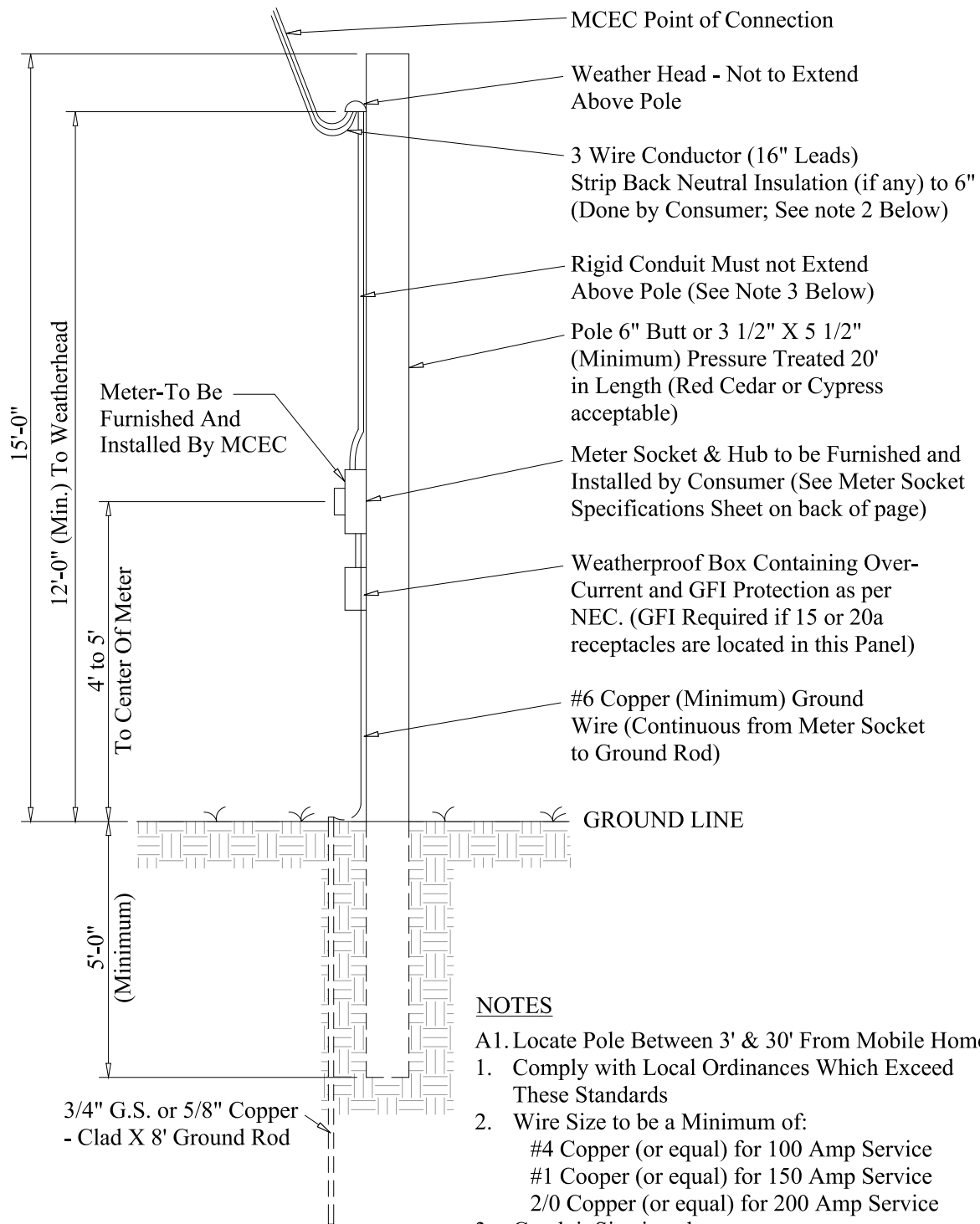
**CALL 3 WORKING DAYS
BEFORE YOU DIG-DRILL-BLAST
1-888-721-7877
PALMETTO UTILITY PROTECTION SERVICE**



NOTES

1. Comply with Local Ordinances Which Exceed These Standards
2. Locate Pole Between 3' & 30' of Connection.
3. Wire Size to be a Minimum of:
#2/0 Cu (or equal) for 200 Amp Service
4. Lexington County requires a #6 or larger green wire to be run with Service Entrance Wire
5. All Material to be Furnished by User Except as Noted
6. Consumer responsible for marking any non-utility installed underground facilities prior to installation of MCEC Underground Service
7. Underground 3 Phase and Single Phase comes to designated point of service.
8. All commercial comes to MCEC designated point of service.

Date	Revision	Date	App. RD 1-24-07	MID-CAROLINA ELECTRIC CO-OP For <u>PERMANENT UNDERGROUND SERVICE</u> <u>POLE CONNECTION - THREE PHASE</u>
			App. BKS 1-24-07	
			App. _____	
			Scale: N.T.S.	
			DATE: 1-24-07	DRAWN BY: KGW



NOTES

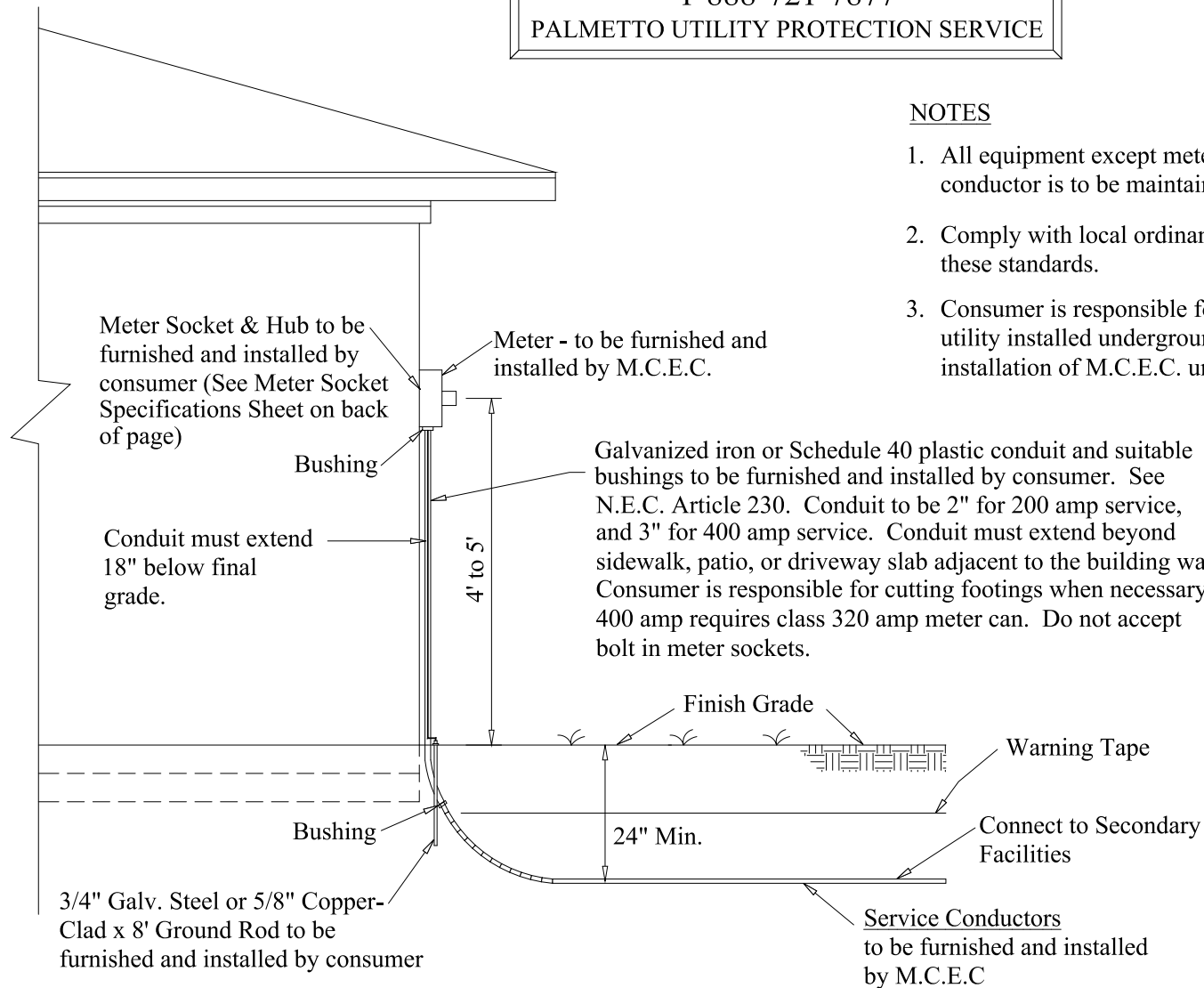
- A1. Locate Pole Between 3' & 30' From Mobile Home
1. Comply with Local Ordinances Which Exceed These Standards
2. Wire Size to be a Minimum of:
 - #4 Copper (or equal) for 100 Amp Service
 - #1 Cooper (or equal) for 150 Amp Service
 - 2/0 Copper (or equal) for 200 Amp Service
3. Conduit Size is to be:
 - 1 1/4" for 100 or 150 Amp Service (150 Amp Meter Can)
 - 2" for 200 Amp Service (200 Amp Meter Can)
4. Lexington County requires a #6 or larger green wire to be run with Service Wire to Trailer

Date	Revision	Date	App. RD 4-17-78	MID-CAROLINA ELECTRIC CO-OP
5-28-80	Info. Added	7-12-90	App. JK 4-17-78	
8-6-81	UPDATED	1-5-99	App. _____	For <u>PERMANENT OVERHEAD SERVICE</u>
5-7-84	UPDATED	6-28-05	App. _____	<u>TO CUSTOMER METER POLE</u>
1-15-85	UPDATED	11-29-05	Scale: N.T.S.	DATE: 4-14-78 Drawn By: PL
12-30-85	UPDATED	01-11-07		
3-12-86	UPDATED			

**CALL 3 WORKING DAYS
BEFORE YOU DIG-DRILL-BLAST
1-888-721-7877
PALMETTO UTILITY PROTECTION SERVICE**

NOTES

1. All equipment except meter and service conductor is to be maintained by consumer.
2. Comply with local ordinances which exceed these standards.
3. Consumer is responsible for marking any non-utility installed underground facilities prior to installation of M.C.E.C. underground service.



Date	Revision	Date	App. RD 2-10-78	MID-CAROLINA ELECTRIC CO-OP
4-17-78	UPDATED	1-24-86	App. LL 2-10-78	For PERMANENT UNDERGROUND SERVICE
5-28-80	UPDATED	7-12-90	App. _____	(METER ON HOUSE)
1-30-84	UPDATED	1-5-99	App. _____	
2-22-84	UPDATED	6-28-05	App. _____	
3-19-84	UPDATED	01-08-07	App. _____	
5-7-84	UPDATED		Scale: N.T.S.	Date: 2-10-78 Drawn By: PL

CALL 3 WORKING DAYS
BEFORE YOU DIG-DRILL-BLAST
1-888-721-7877
PALMETTO UTILITY PROTECTION SERVICE

3Ø PAD-MOUNTED
TRANSFORMER - PROVIDED,
INSTALLED, AND MAINTAINED
BY MCEC

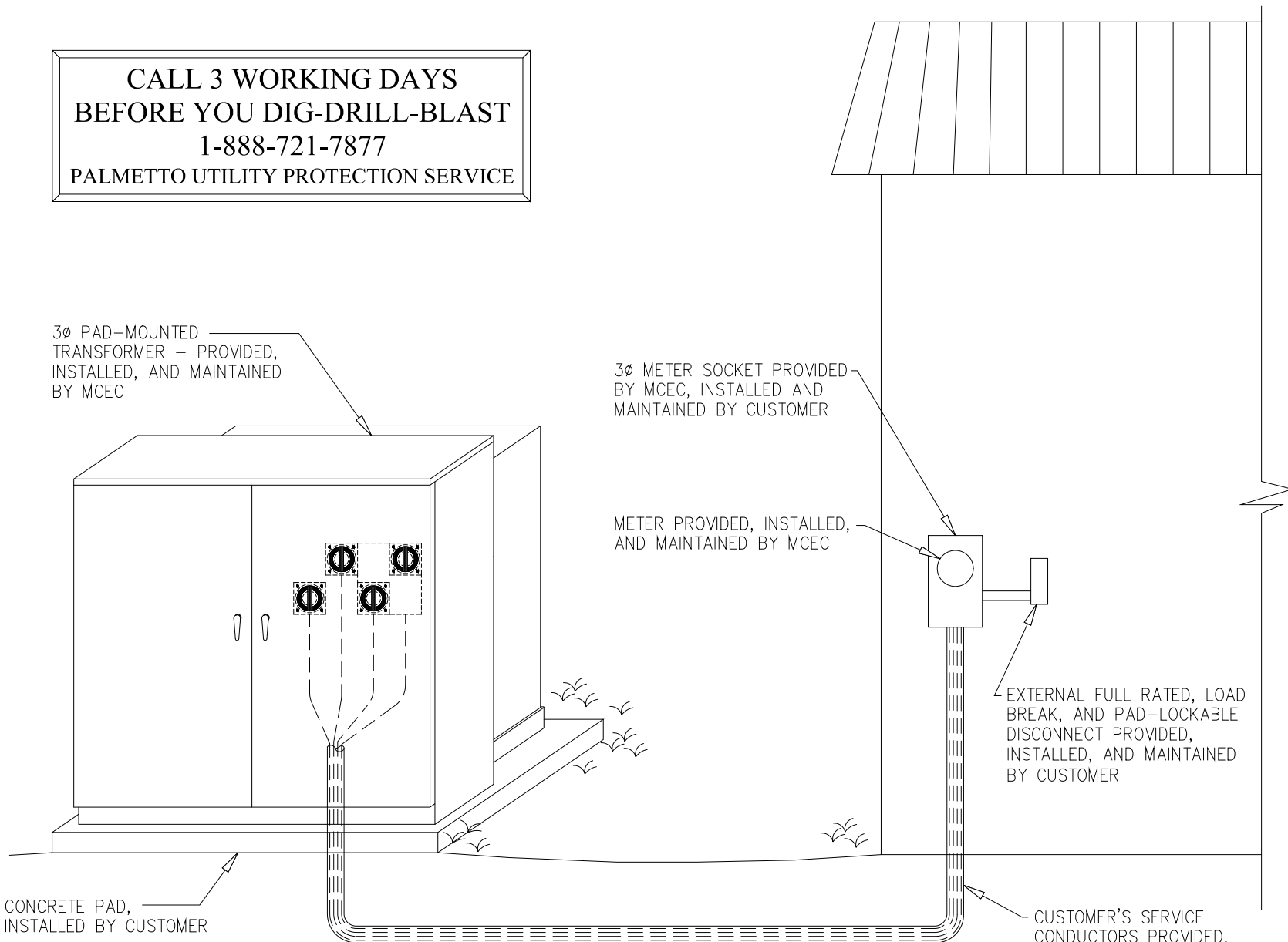
3Ø METER SOCKET PROVIDED
BY MCEC, INSTALLED AND
MAINTAINED BY CUSTOMER

METER PROVIDED, INSTALLED,
AND MAINTAINED BY MCEC

EXTERNAL FULL RATED, LOAD
BREAK, AND PAD-LOCKABLE
DISCONNECT PROVIDED,
INSTALLED, AND MAINTAINED
BY CUSTOMER

CUSTOMER'S SERVICE
CONDUCTORS PROVIDED,
INSTALLED, AND MAINTAINED
BY CUSTOMER

CONCRETE PAD,
INSTALLED BY CUSTOMER



Date

Revision

Date

App. BW 2/10/06

App. _____

App. _____

Scale: N.T.S.

MID-CAROLINA ELECTRIC CO-OP

For 3 Ø NON-RESIDENTIAL UNDERGROUND
SERVICE - 200 AMP MAXIMUM

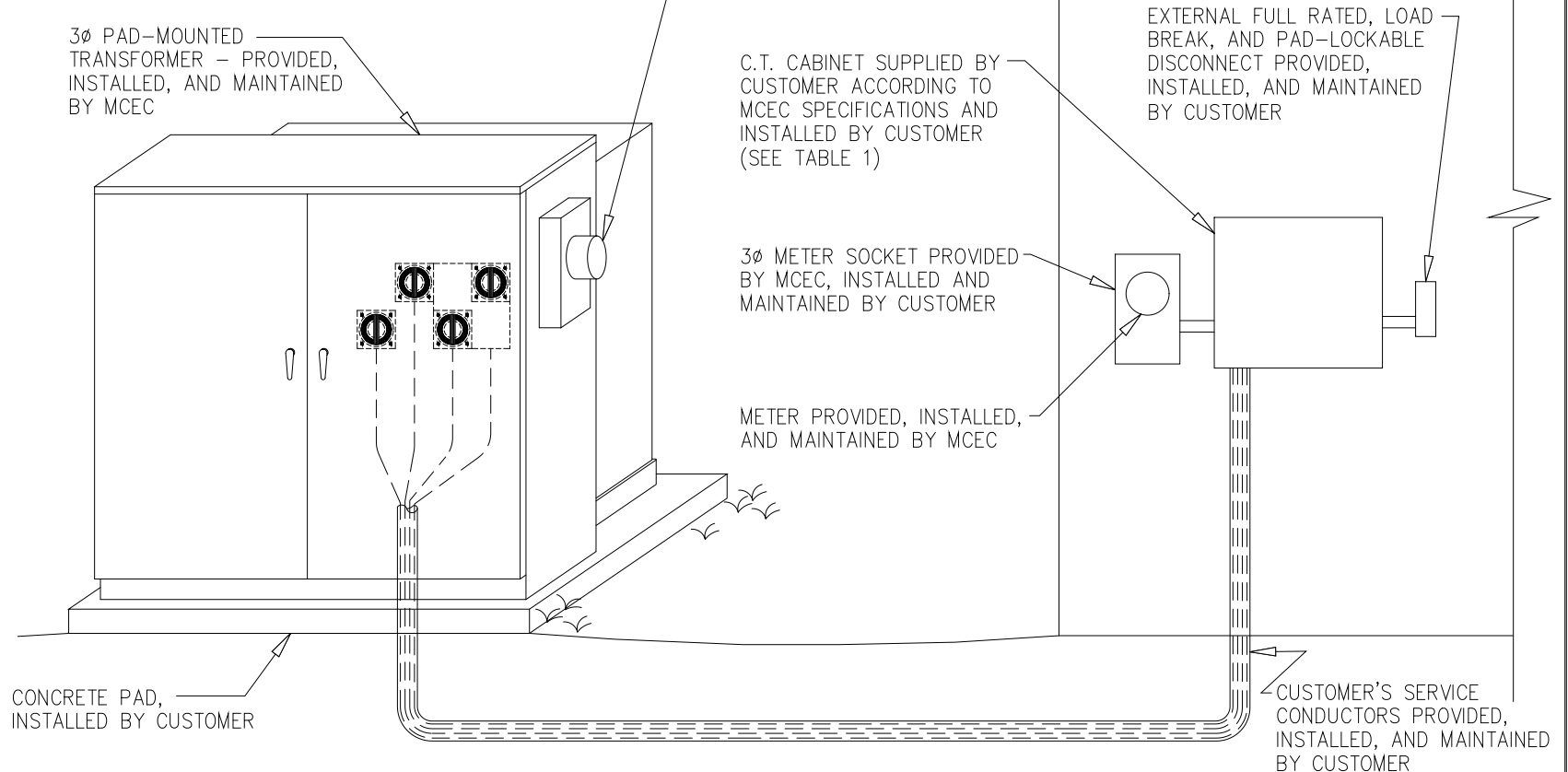
Date: 2-10-06

Drawn By: KW

TABLE 1 – C.T. ENCLOSURE

C.T. RATING	H	W	D	DESCRIPTION
400:5 OR BELOW	24"	24"	12"	HINGED, PAD-LOCKABLE, WATER TIGHT GALV. STEEL, DURHAM CAT.#242412-RDW OR EQUIV.
OVER 400:5	36"	36"	12"	HINGED, PAD-LOCKABLE, WATER TIGHT GALV. STEEL, DURHAM CAT.#363612-RDW OR EQUIV.

**CALL 3 WORKING DAYS
BEFORE YOU DIG-DRILL-BLAST**
1-888-721-7877
PALMETTO UTILITY PROTECTION SERVICE



Date

Revision

Date

App. BW 2/10/06

App. _____

App. _____

Scale: N.T.S.

MID-CAROLINA ELECTRIC CO-OP

For 3 Ø NON-RESIDENTIAL UNDERGROUND
SERVICE - C.T. RATED (OVER 200 AMP)

Date: 2-10-06

Drawn By: KW

METER SOCKET SPECIFICATIONS

200 AMP SINGLE PHASE RESIDENTIAL SERVICE

ALL SOCKETS ARE TO BE RINGLESS, ALL SOCKETS MUST BE *UL* APPROVED, LISTED DEMINSIONS AND CONNECTOR SIZES ARE MINIMUMS.

CONT. AMP RATING	SERVICE	CONNECTORS SIZE	W	DEMINSIONS (IN) H	D		HUB	NO. OF TERMINALS	BY PASS	ENCLOSURE MATERIAL
200	OH	#6- 350	8	14	4.5		2	4	NONE	GAL. STEEL
200	OH/UG	#6- 350	11	14	4.5		2/BL	4	NONE	GAL. STEEL
200	UG	#6- 350	11	15	4.5		BL	4	NONE	GAL. STEEL

200 AMP SINGLE PHASE COMMERCIAL SERVICE

ALL SOCKETS ARE TO BE RINGLESS, ALL SOCKEST MUST BE *UL* APPROVED, LISTED DEMINSIONS AND CONNECTOR SIZES ARE MINIMUMS.

CONT. AMP RATING	SERVICE	CONNECTORS SIZE	W	DEMINSIONS (IN) H	D		HUB	NO. OF TERMINALS	BY PASS	ENCLOSURE MATERIAL
200	OH	#6- 350	8	14	4.5		2	4	LEVER BYPASS	GAL. STEEL
200	OH/UG	#6- 350	11	14	4.5		2/BL	4	LEVER BYPASS	GAL. STEEL
200	UG	#6- 350	11	15	4.5		BL	4	LEVER BYPASS	GAL. STEEL

320 AMP SINGLE PHASE RESIDENTIAL / COMMERCIAL SERVICE

ALL SOCKETS ARE TO BE RINGLESS, ALL SOCKETS MUST BE *UL* APPROVED, LISTED DEMINSIONS AND CONNECTOR SIZES ARE MINIMUMS. (THIS SOCKET CAN BE PURCHASED FROM MCEC)

CONT. AMP RATING	SERVICE	CONNECTOR SIZE	W	DEMINSIONS (IN) H	D		HUB	NO. OF TERMINALS	BY PASS	ENCLOSURE MATERIAL
320	OH/UG	3/8" STUD	15	36	5.75		4	4	LEVER BYPASS WITH JAW RELEASE	GAL. STEEL

200 AMP POLYPHASE PHASE RESIDENTIAL / COMMERCIAL SERVICE

ALL SOCKETS ARE TO BE RINGLESS, ALL SOCKETS MUST BE *UL* APPROVED, LISTED DEMINSIONS AND CONNECTOR SIZES ARE MINIMUMS. (FURNISHED BY MCEC)

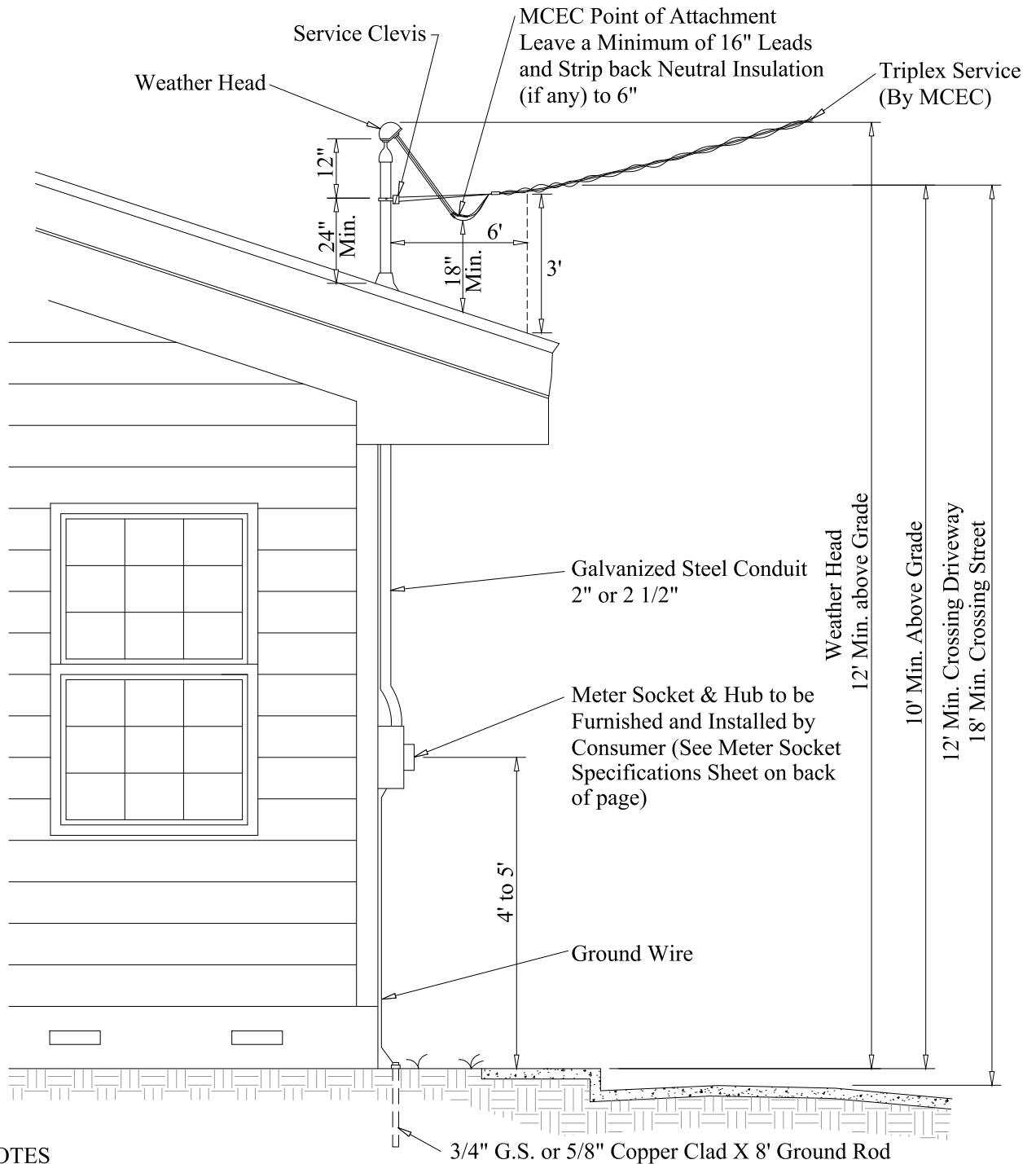
CONT. AMP RATING	SERVICE	CONNECTOR SIZE	W	DEMINSIONS (IN) H	D		HUB	NO. OF TERMINALS	BY PASS	ENCLOSURE MATERIAL
200	OH/UG	3/8" STUD OR #6 – 350	13	19	5.25		3	7	LEVER BYPASS WITH JAW RELEASE	GAL. STEEL

200 AMP SINGLE PHASE METER POLE SERVICE

ALL SOCKETS ARE TO BE RINGLESS, ALL SOCKETS MUST BE *UL* APPROVED, LISTED DEMINSIONS AND CONNECTOR SIZES ARE MINIMUMS. THIS IS A COMBINATION METER SOCKET AND 200 AMP DISCONNECT, CUSTOMER MAY ALSO USE ONE OF THE SELECTIONS FROM SINGLE PHASE RESIDENTIAL SERVICE WITH A SEPARATE 200 AMP DISCONNECT.

CONT. AMP RATING	SERVICE	CONNECTORS SIZE	W	DEMINSIONS (IN) H	D		HUB	NO. OF TERMINALS	BY PASS	ENCLOSURE MATERIAL
200	OH/UG	#6- 350	14	35	4.5		2/BL	4	NONE	GAL. STEEL

TRIPLEX SERVICE

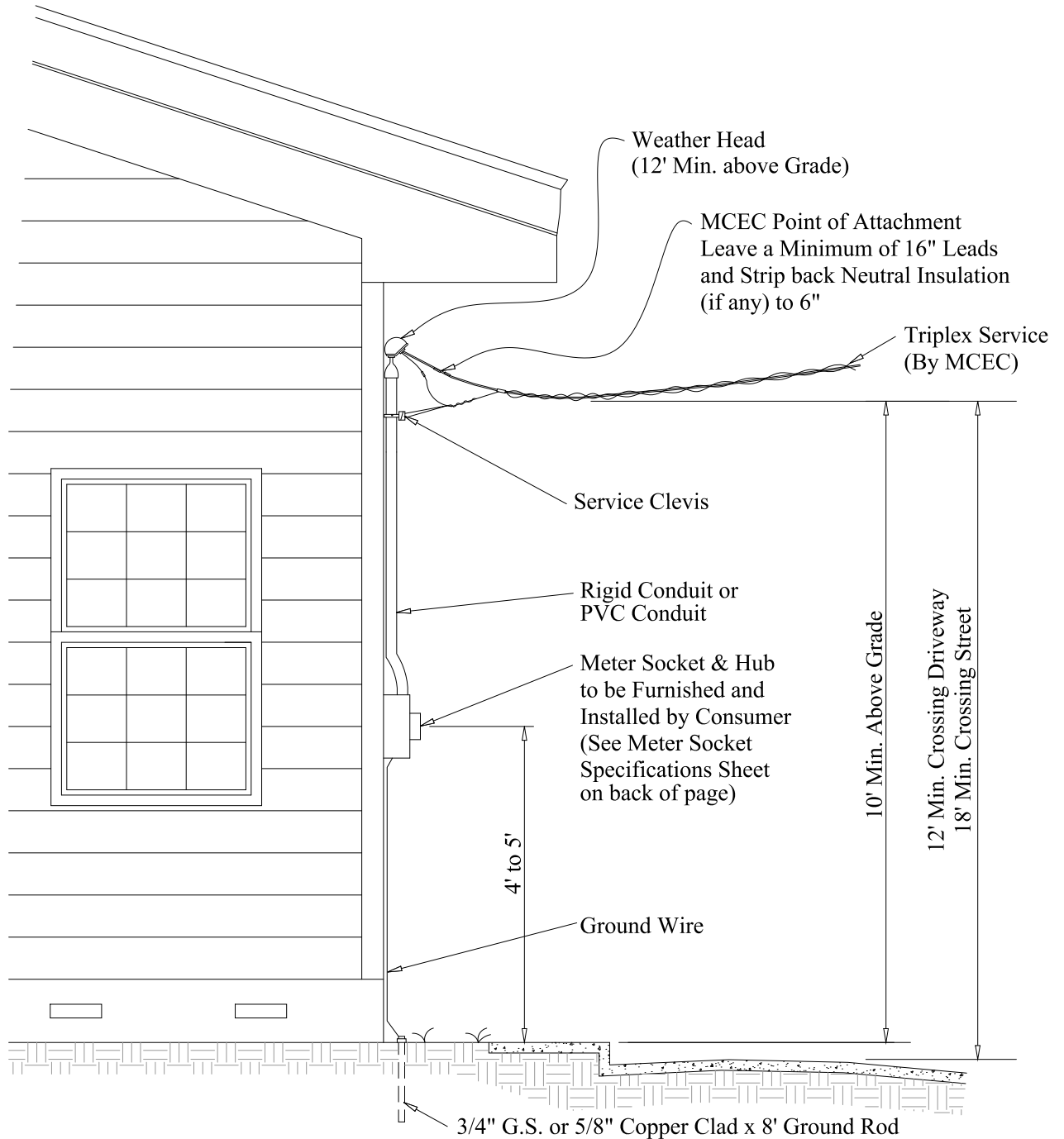


NOTES

1. Comply with Local Ordinances Which Exceed These Standards
2. Conduit to be Properly Blocked to Rafters, and Securely Attached to Outside Wall
3. All Equipment Shown is to be Furnished, Installed, and Maintained by Customer except Meter, Service Wire, and Service Clevis

Date	Revision	Date	App. RD 4-17-78	MID-CAROLINA ELECTRIC CO-OP
5-7-84	UPDATED			
7-12-90	UPDATED		App. JK 4-17-78	For TRIPLEX SERVICE DETAIL (OVER EAVE)
1-5-99	UPDATED		App. _____	
6-28-05	UPDATED			
01-11-07	UPDATED			
			Scale: N.T.S.	Date: 4-11-78
				Drawn By: PL

TRIPLEX SERVICE

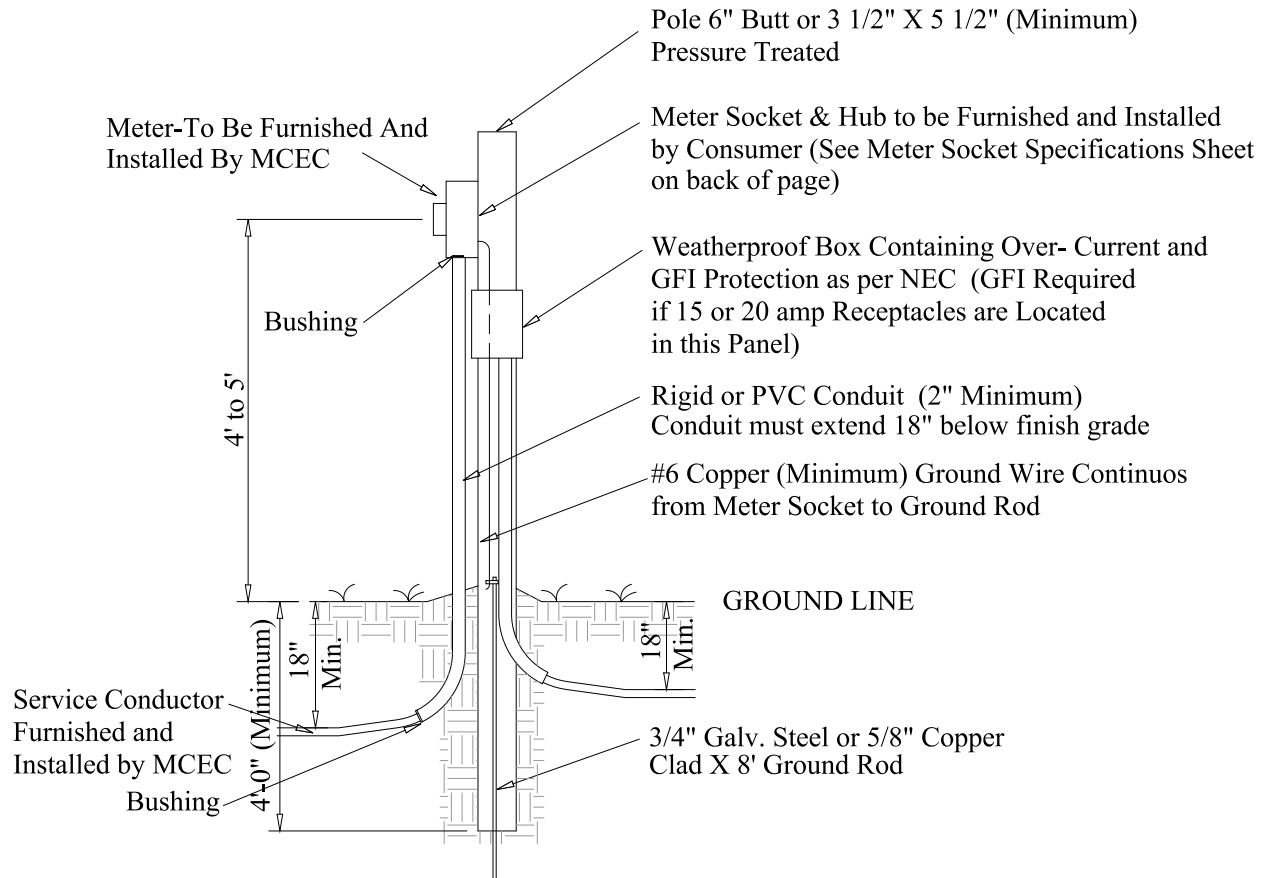


NOTES

1. Comply with Local Ordinances Which Exceed These Standards
2. Conduit must be 2" or 2-1/2" and Securely Fastened to Outside Wall
3. All Equipment Shown is to be Furnished, Installed, and Maintained by Customer except Meter and Service
4. Wireholder to be Securely Mounted into Rafter or Wall Studs

Date	Revision	Date	App. RD 4-17-78	MID-CAROLINA ELECTRIC CO-OP	
5-7-84	UPDATED				
7-12-90	UPDATED		App. JK 4-17-78	For PERMANENT OVERHEAD SERVICE (UNDER EAVE)	
1-5-99	UPDATED		App. _____		
6-28-05	UPDATED				
01-08-07	UPDATED				
			Scale: N.T.S.	Date: 4-11-78	Drawn By: PL

**CALL 3 WORKING DAYS
BEFORE YOU DIG-DRILL-BLAST
1-888-721-7877
PALMETTO UTILITY PROTECTION SERVICE**

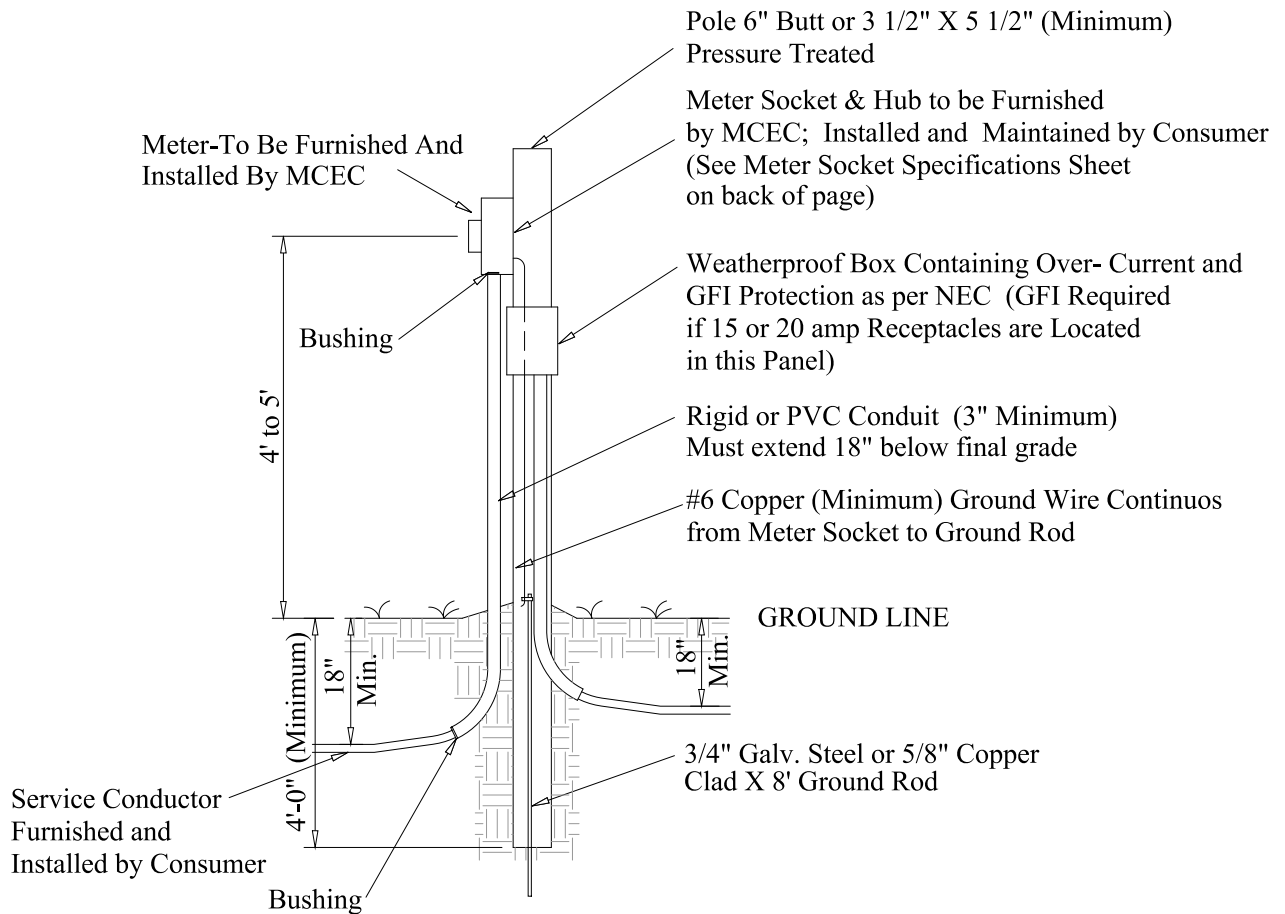


NOTES

1. Comply with Local Ordinances Which Exceed These Standards
2. Locate Pole Between 3' & 30' of Connection.
3. Wire Size to be a Minimum of:
 - #4 Cu. (or equal) for 100 Amp Service
 - #1 Cu. (or equal) for 150 Amp Service
 - #2/0 Cu (or equal) for 200 Amp Service
4. Conduit Size is to be:
 - 1 1/4" for 100 or 150 Amp Service
 - 2" for 200 Amp Service
5. Lexington County requires a #6 or larger green wire to be run with Service Entrance Wire
6. All Material to be Furnished by User Except as Noted
7. Consumer responsible for marking any non-utility installed underground facilities prior to installation of MCEC Underground Service

Date	Revision	Date	App. RD 1-24-07	MID-CAROLINA ELECTRIC CO-OP For PERMANENT UNDERGROUND SERVICE POLE CONNECTION
7-12-90	UPDATED			
1-5-99	UPDATED		App. BKS 1-24-07	
6-28-05	UPDATED		App. _____	
11-29-05	UPDATED			
01-08-07	UPDATED			
			Scale: N.T.S.	DATE: 5-27-88 DRAWN BY: JBA

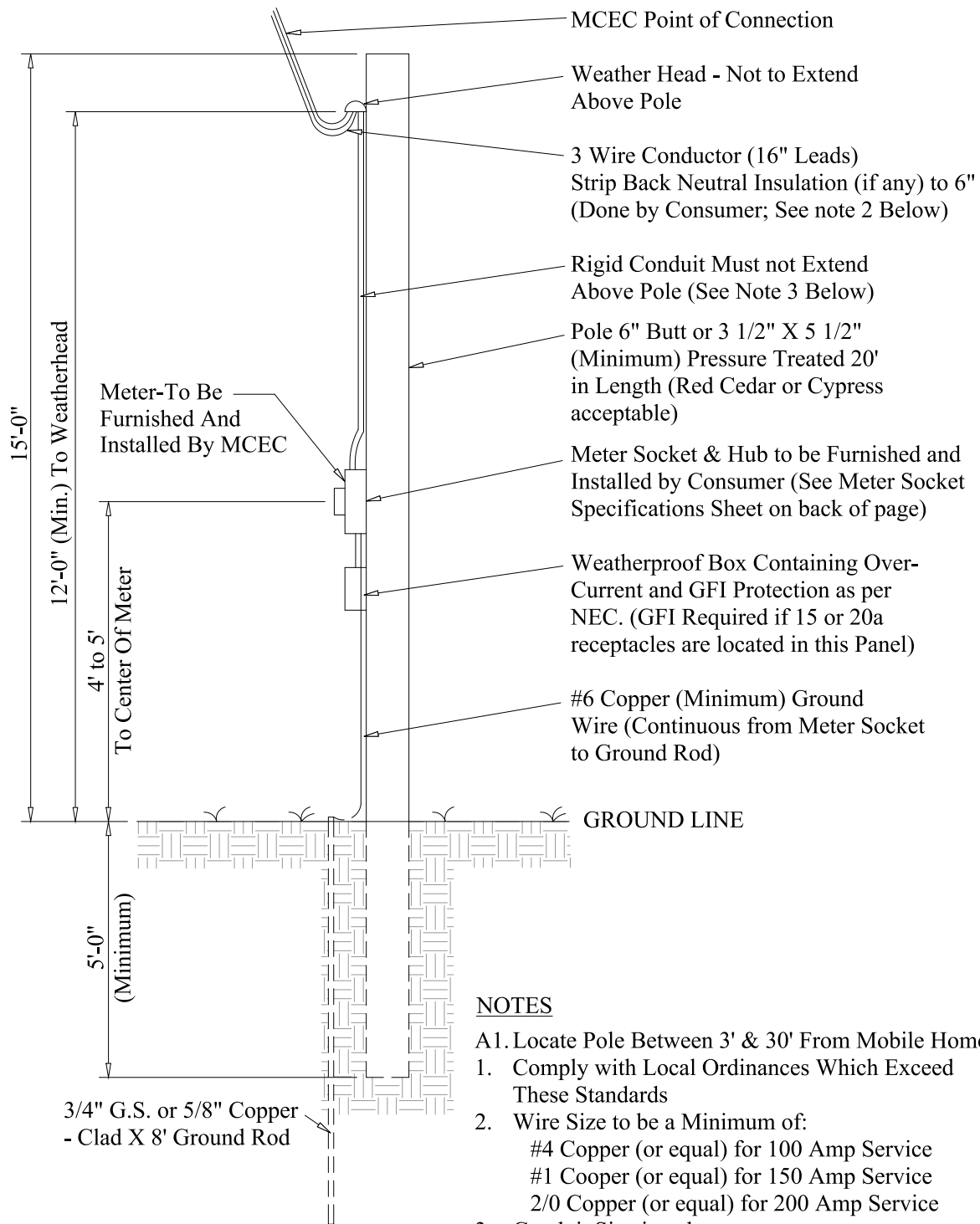
**CALL 3 WORKING DAYS
BEFORE YOU DIG-DRILL-BLAST
1-888-721-7877
PALMETTO UTILITY PROTECTION SERVICE**



NOTES

1. Comply with Local Ordinances Which Exceed These Standards
2. Locate Pole Between 3' & 30' of Connection.
3. Wire Size to be a Minimum of:
#2/0 Cu (or equal) for 200 Amp Service
4. Lexington County requires a #6 or larger green wire to be run with Service Entrance Wire
5. All Material to be Furnished by User Except as Noted
6. Consumer responsible for marking any non-utility installed underground facilities prior to installation of MCEC Underground Service
7. Underground 3 Phase and Single Phase comes to designated point of service.
8. All commercial comes to MCEC designated point of service.

Date	Revision	Date	App. RD 1-24-07	MID-CAROLINA ELECTRIC CO-OP For PERMANENT UNDERGROUND SERVICE POLE CONNECTION - THREE PHASE
			App. BKS 1-24-07	
			App. _____	
			Scale: N.T.S.	
			DATE: 1-24-07	DRAWN BY: KGW



NOTES

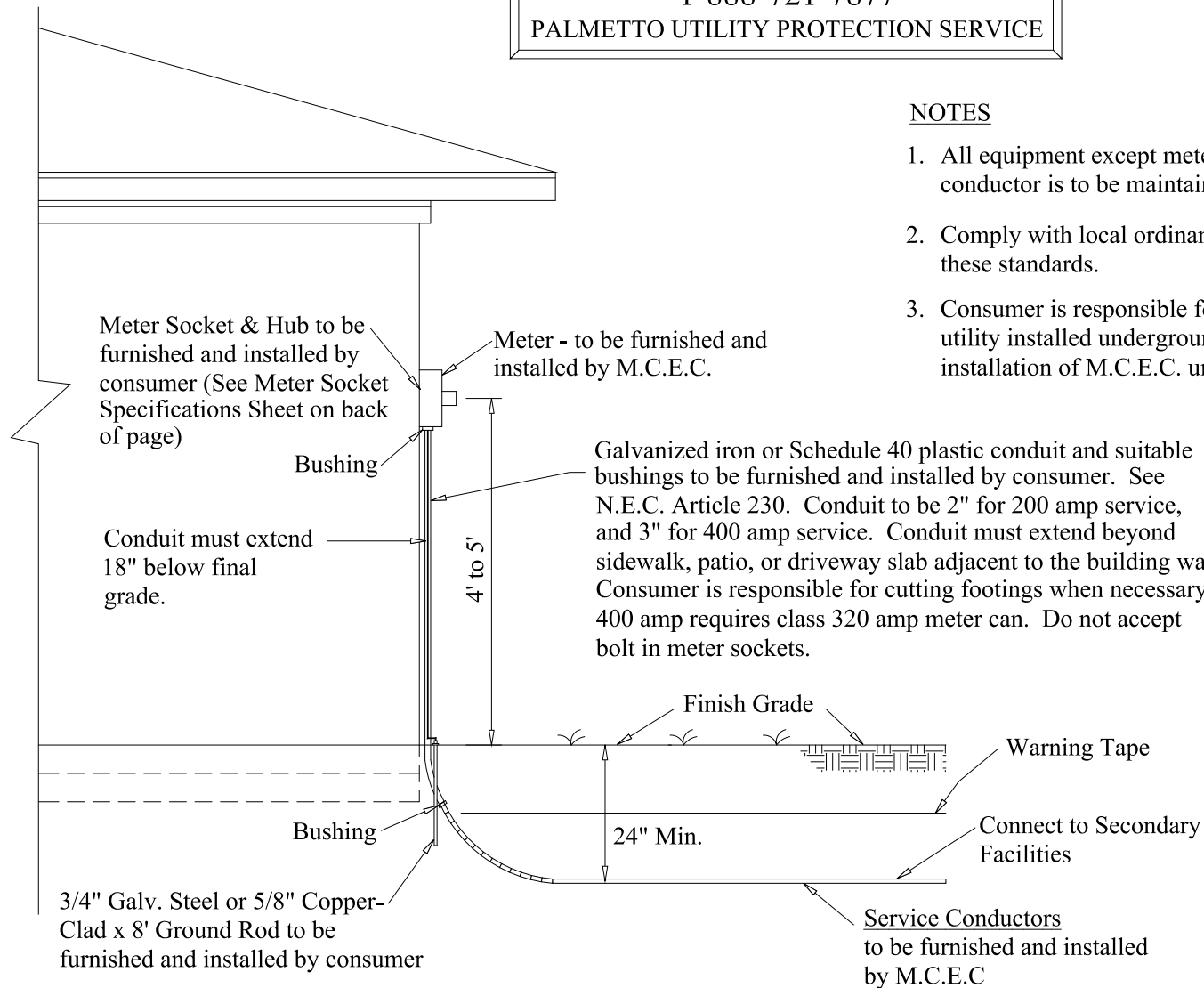
- A1. Locate Pole Between 3' & 30' From Mobile Home
1. Comply with Local Ordinances Which Exceed These Standards
2. Wire Size to be a Minimum of:
 - #4 Copper (or equal) for 100 Amp Service
 - #1 Cooper (or equal) for 150 Amp Service
 - 2/0 Copper (or equal) for 200 Amp Service
3. Conduit Size is to be:
 - 1 1/4" for 100 or 150 Amp Service (150 Amp Meter Can)
 - 2" for 200 Amp Service (200 Amp Meter Can)
4. Lexington County requires a #6 or larger green wire to be run with Service Wire to Trailer

Date	Revision	Date	App. RD 4-17-78	MID-CAROLINA ELECTRIC CO-OP
5-28-80	Info. Added	7-12-90	App. JK 4-17-78	
8-6-81	UPDATED	1-5-99	App. _____	For <u>PERMANENT OVERHEAD SERVICE</u>
5-7-84	UPDATED	6-28-05	App. _____	<u>TO CUSTOMER METER POLE</u>
1-15-85	UPDATED	11-29-05	Scale: N.T.S.	DATE: 4-14-78 Drawn By: PL
12-30-85	UPDATED	01-11-07		
3-12-86	UPDATED			

**CALL 3 WORKING DAYS
BEFORE YOU DIG-DRILL-BLAST
1-888-721-7877
PALMETTO UTILITY PROTECTION SERVICE**

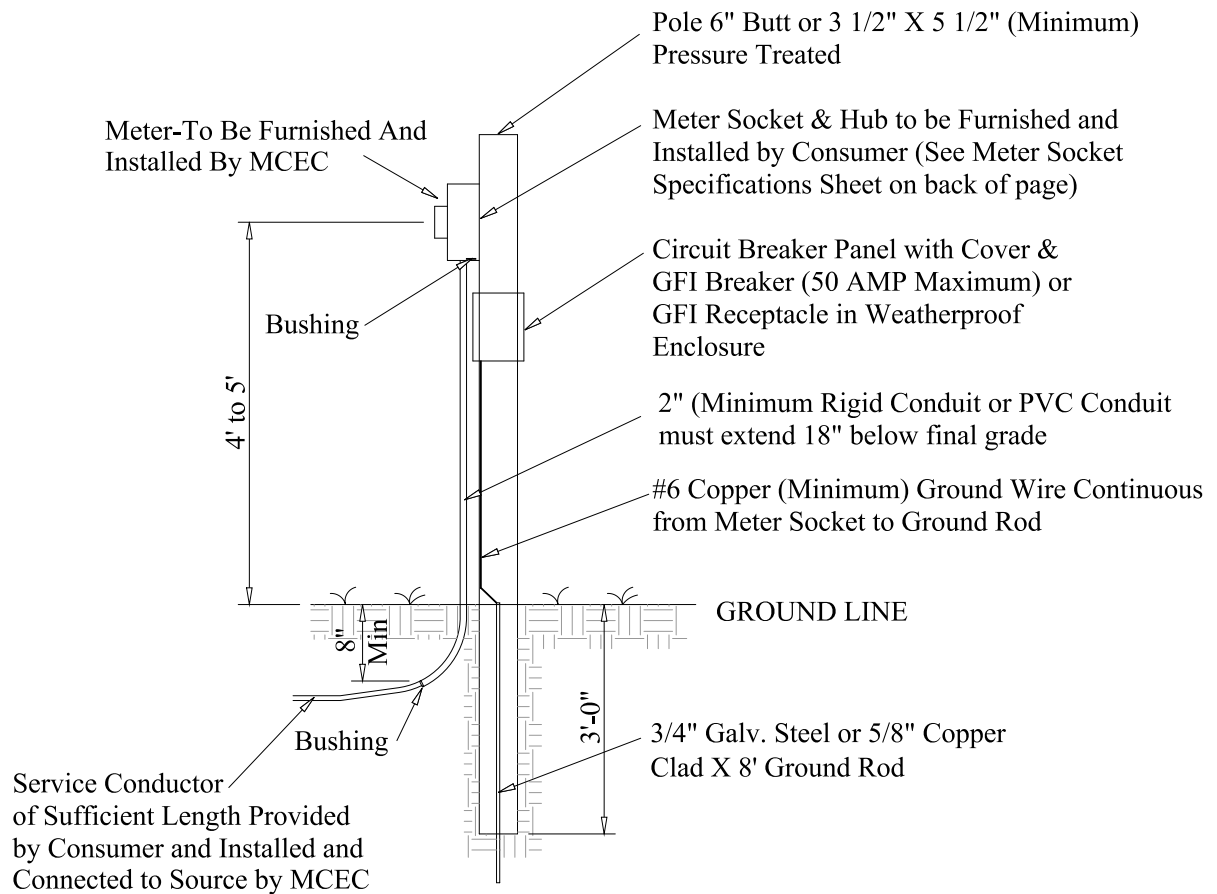
NOTES

1. All equipment except meter and service conductor is to be maintained by consumer.
2. Comply with local ordinances which exceed these standards.
3. Consumer is responsible for marking any non-utility installed underground facilities prior to installation of M.C.E.C. underground service.



Date	Revision	Date	App. RD 2-10-78	MID-CAROLINA ELECTRIC CO-OP
4-17-78	UPDATED	1-24-86	App. LL 2-10-78	For PERMANENT UNDERGROUND SERVICE
5-28-80	UPDATED	7-12-90	App. _____	(METER ON HOUSE)
1-30-84	UPDATED	1-5-99	App. _____	
2-22-84	UPDATED	6-28-05	App. _____	
3-19-84	UPDATED	01-08-07	App. _____	
5-7-84	UPDATED		Scale: N.T.S.	Date: 2-10-78 Drawn By: PL

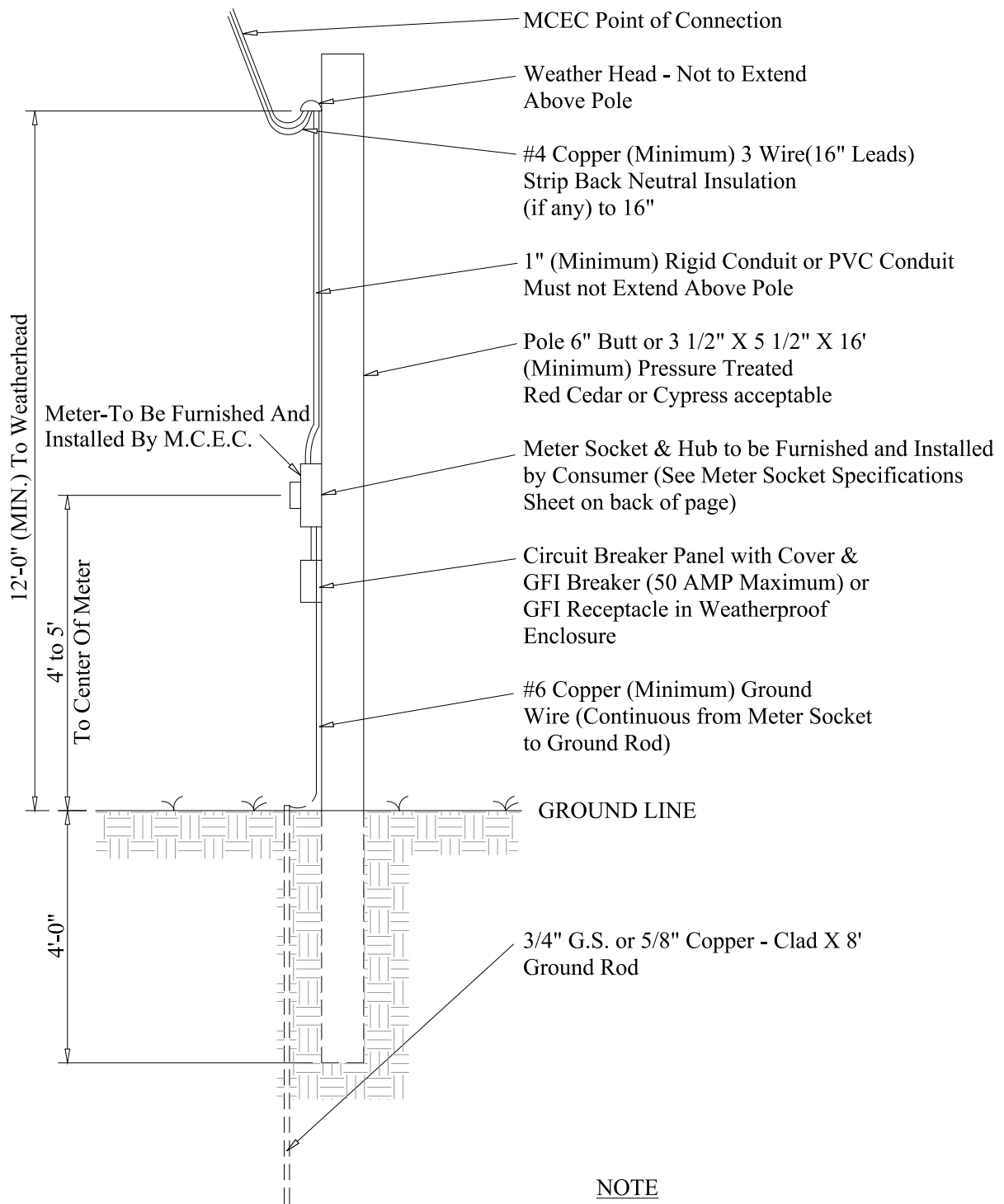
**CALL 3 WORKING DAYS
BEFORE YOU DIG-DRILL-BLAST
1-888-721-7877
PALMETTO UTILITY PROTECTION SERVICE**



NOTES

1. Comply with Local Ordinances Which Exceed These Standards
2. All Material is to be Furnished by user except as Noted
3. Mid-Carolina Electric Co-op Underground Facilities are to be Located before Digging

Date	Revision	Date	App. RCD 3-15-78	MID-CAROLINA ELECTRIC CO-OP
1-30-84	UPDATED	11-29-05	App. LNL 3-15-78	
3-13-86	UPDATED	01-08-07	App. _____	For TEMPORARY SERVICE FOR UNDERGROUND LOCATIONS ONLY
4-29-86	UPDATED		Scale: N.T.S.	
7-12-90	UPDATED			DATE: 4-27-78
1-5-99	UPDATED			Drawn By: PL
6-28-05	UPDATED			

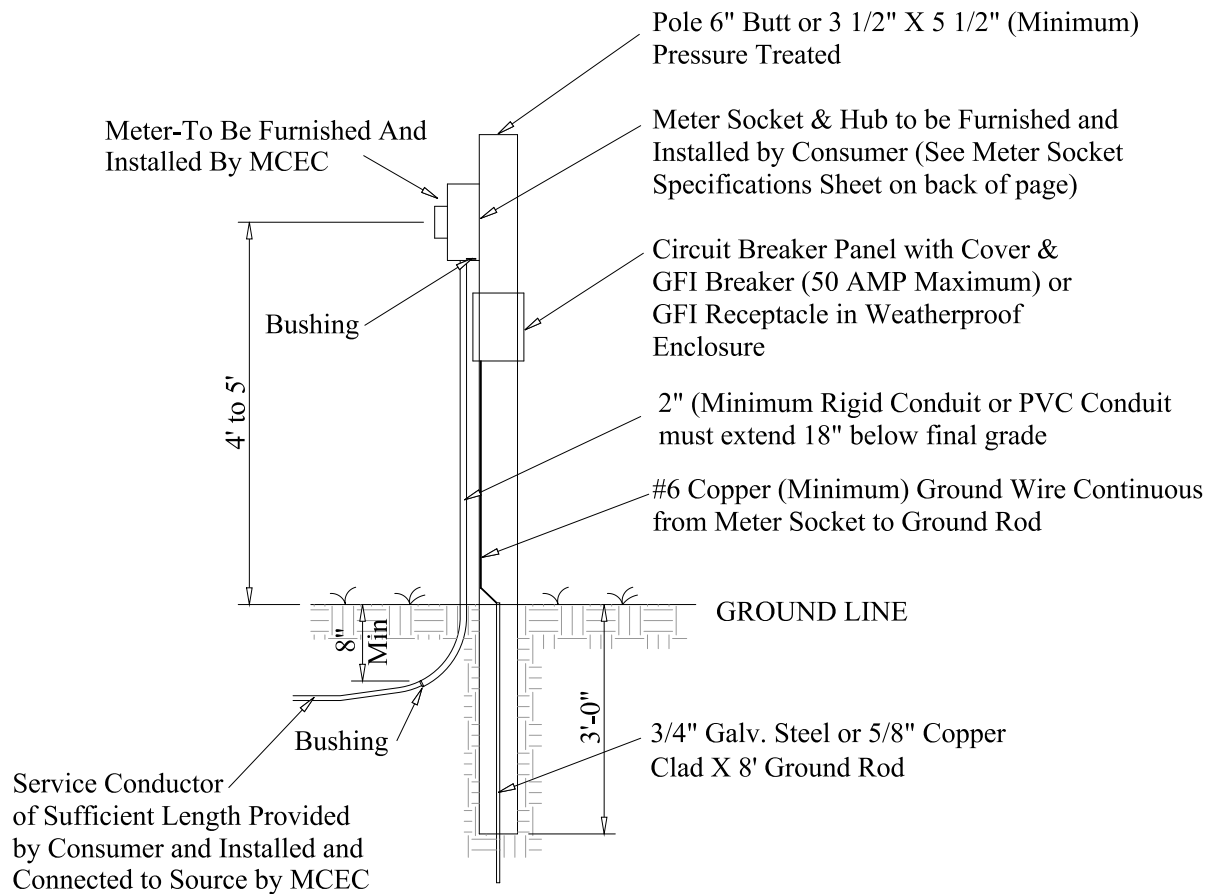


NOTE

Where this Drawing Conflicts with Local Ordinances, Comply with Local Ordinances.

Date	Revision	Date	App. RCD 3-15-78	MID-CAROLINA ELECTRIC CO-OP
4-17-78	UPDATED	4-29-86	App. LNL 3-15-78	
5-28-80	UPDATED	7-12-90	App. _____	For TEMPORARY OVERHEAD SERVICE
8-6-81	UPDATED	1-5-99	Scale: N.T.S.	
5-7-84	UPDATED	6-28-05	DATE: 3-14-78	Drawn By: PL
1-15-85	UPDATED	11-29-05		
3-12-86	UPDATED	01-08-07		

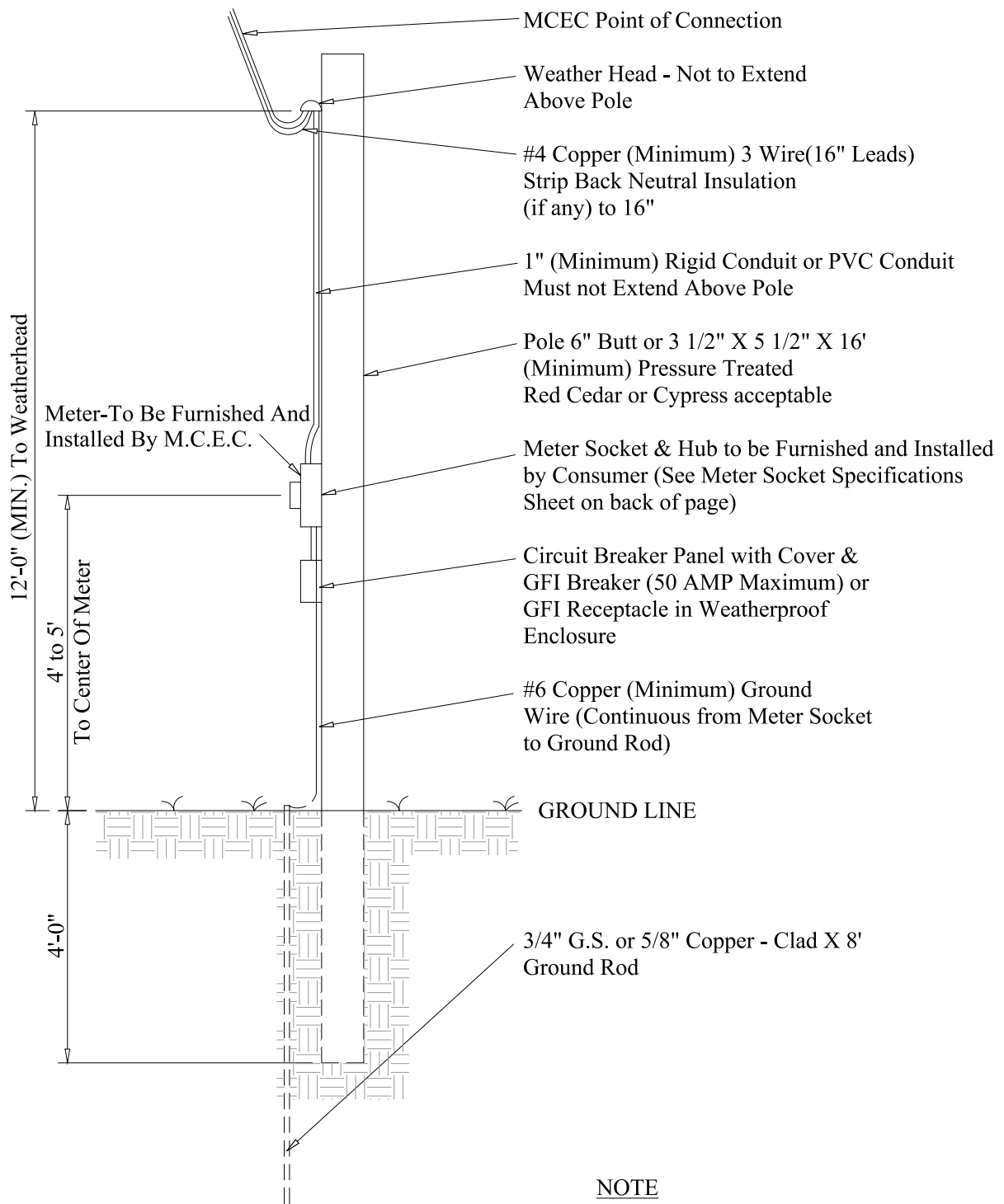
**CALL 3 WORKING DAYS
BEFORE YOU DIG-DRILL-BLAST
1-888-721-7877
PALMETTO UTILITY PROTECTION SERVICE**



NOTES

1. Comply with Local Ordinances Which Exceed These Standards
2. All Material is to be Furnished by user except as Noted
3. Mid-Carolina Electric Co-op Underground Facilities are to be Located before Digging

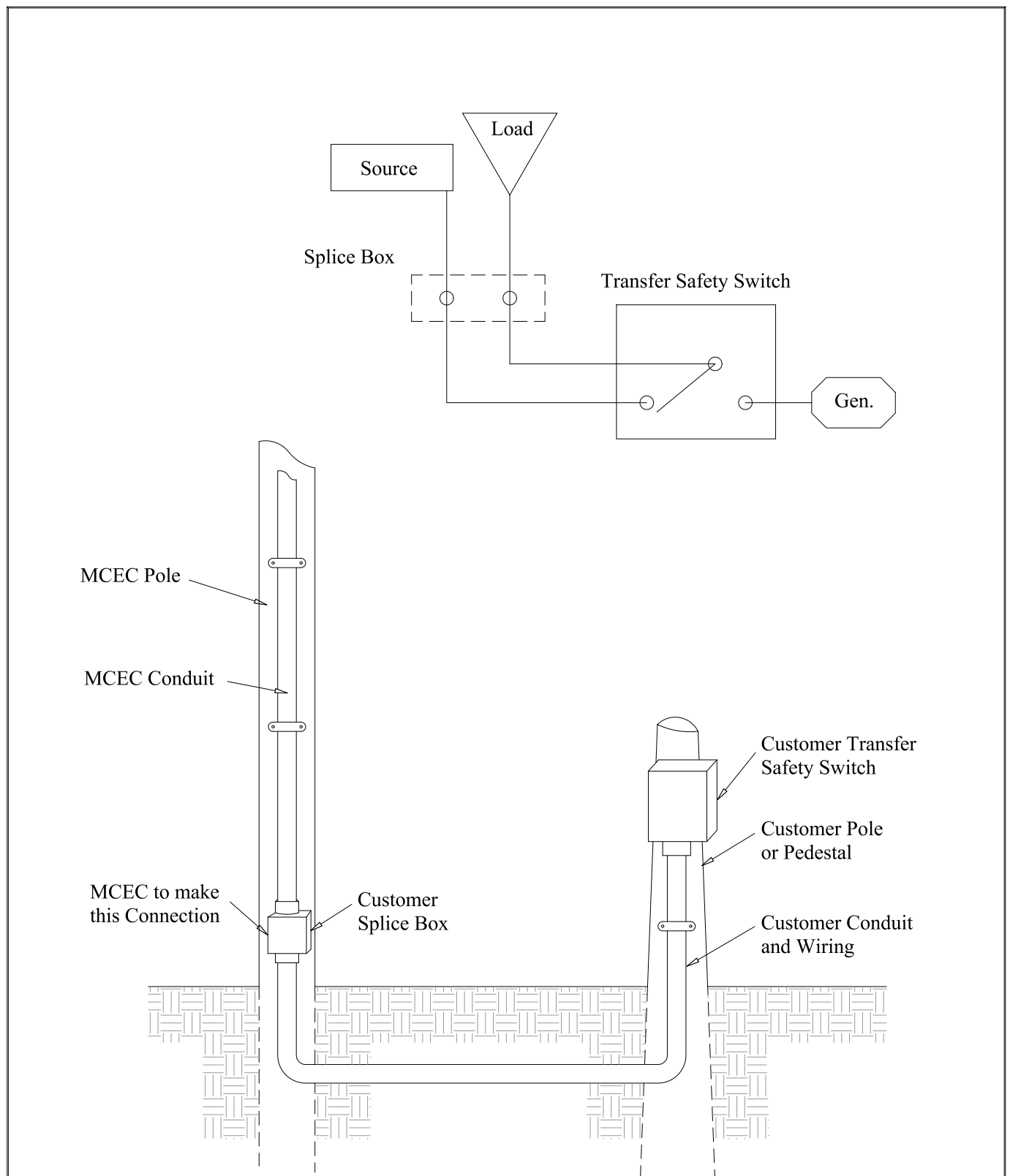
Date	Revision	Date	App. RCD 3-15-78	MID-CAROLINA ELECTRIC CO-OP
1-30-84	UPDATED	11-29-05	App. LNL 3-15-78	
3-13-86	UPDATED	01-08-07	App. _____	For TEMPORARY SERVICE FOR UNDERGROUND LOCATIONS ONLY
4-29-86	UPDATED		Scale: N.T.S.	
7-12-90	UPDATED			DATE: 4-27-78
1-5-99	UPDATED			Drawn By: PL
6-28-05	UPDATED			



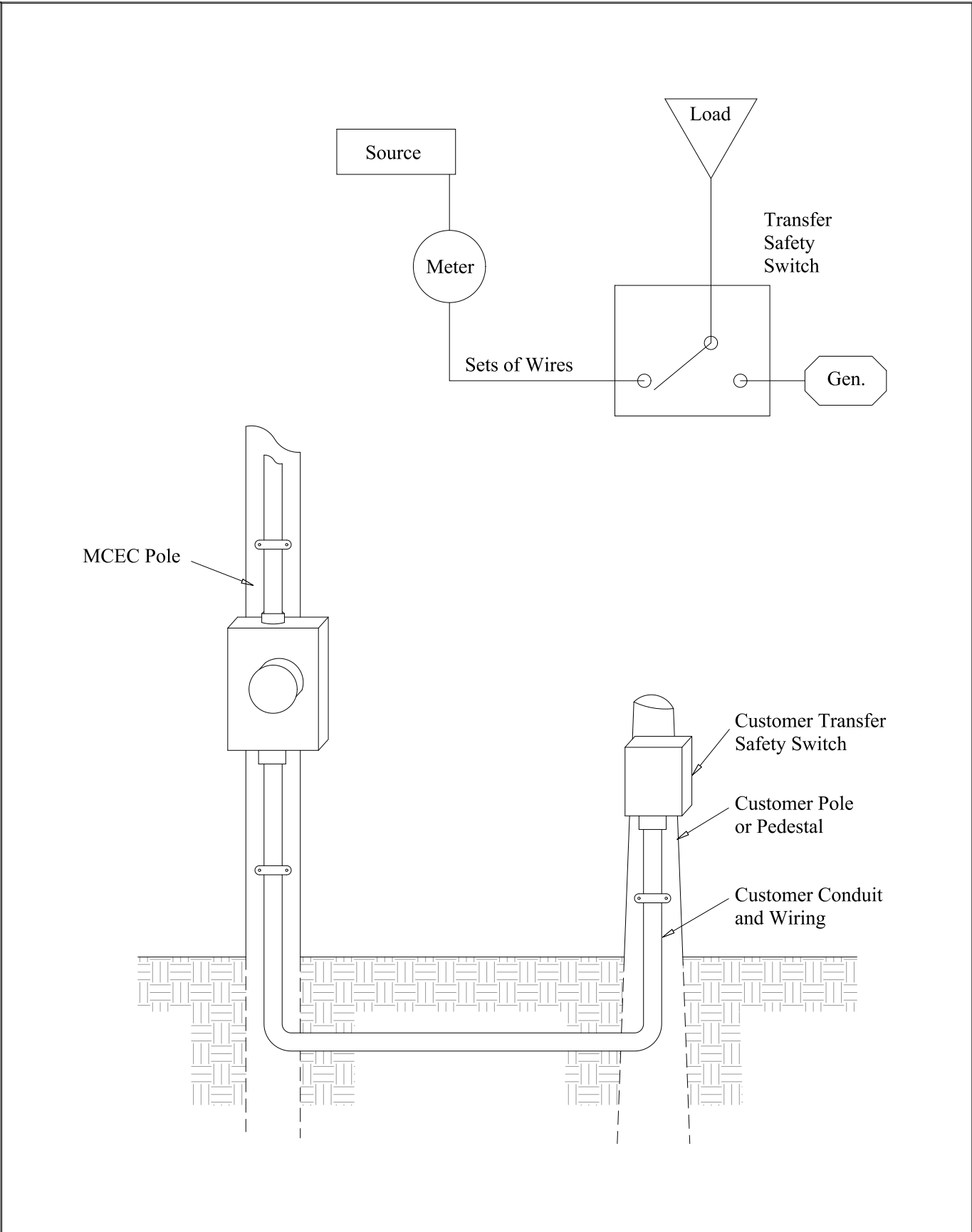
NOTE

Where this Drawing Conflicts with Local Ordinances, Comply with Local Ordinances.

Date	Revision	Date	App. RCD 3-15-78	MID-CAROLINA ELECTRIC CO-OP
4-17-78	UPDATED	4-29-86	App. LNL 3-15-78	
5-28-80	UPDATED	7-12-90	App. _____	For TEMPORARY OVERHEAD SERVICE
8-6-81	UPDATED	1-5-99	Scale: N.T.S.	
5-7-84	UPDATED	6-28-05	DATE: 3-14-78	Drawn By: PL
1-15-85	UPDATED	11-29-05		
3-12-86	UPDATED	01-08-07		



Date	Revision	Date	App. RD 1-24-07	MID-CAROLINA ELECTRIC CO-OP	
			App. BKS 1-24-07		
			App. _____	For GENERATOR BY-PASS SWITCH	
				ON MCEC C.T. METER	
			Scale: N.T.S.	DATE: 1-24-07	DRAWN BY: KW



Date	Revision	Date	App. RD 1-24-07	MID-CAROLINA ELECTRIC CO-OP For GENERATOR BY-PASS SWITCH ON MCEC SELF CONTAINED METER
			App. BKS 1-24-07	
			App. _____	
			Scale: N.T.S.	
			DATE: 1-24-07	DRAWN BY: KW